

STRAW BALE architecture
STROHBALLEN Architektur



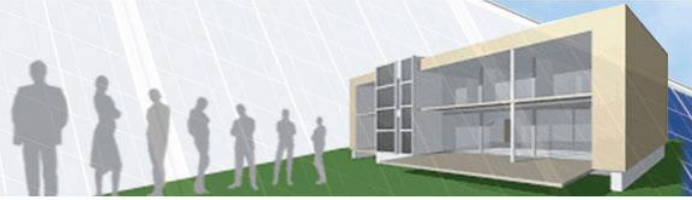
(Bigger) Community & Business Buildings

asbn | Herbert Gruber

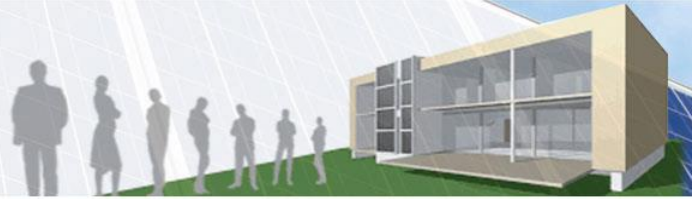


Straw bale building Training
for European Professionals



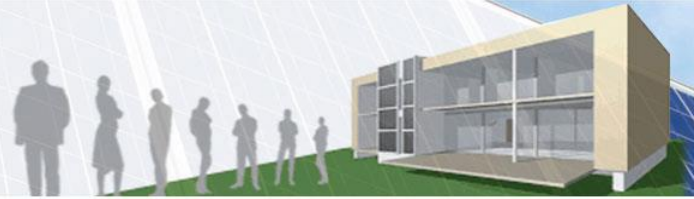


Architect:
Sarah Wigglesworth
Place: London
Architectural Office
Year: 2001
Straw Bale Wall
Size: **427 m²**



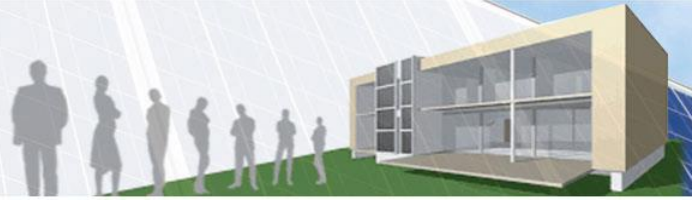
Architect:
Sarah Wigglesworth
Place: London
Architectural Office
Year: 2001
Straw Bale Wall
Size: **427 m2**



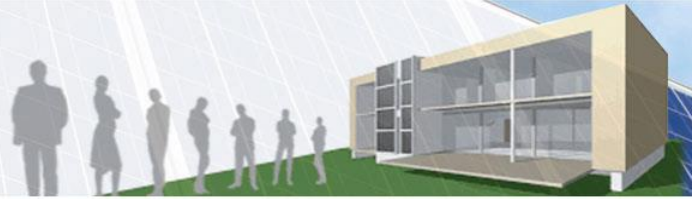


Architects:
Werner Schmidt &
Margaret Schwarz
Place: Dalsant, It
Year: 2003
Straw Bale House
Size: **3 story**



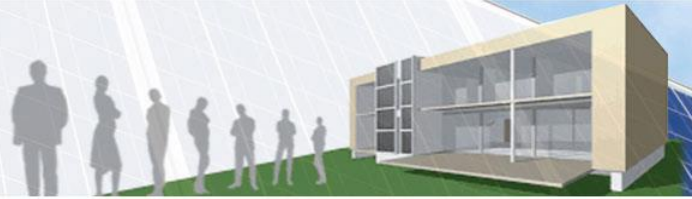


Architects:
Werner Schmidt &
Margaret Schwarz
Place: Dalsant, It
Year: 2003
Straw Bale House
Size: **3 story**



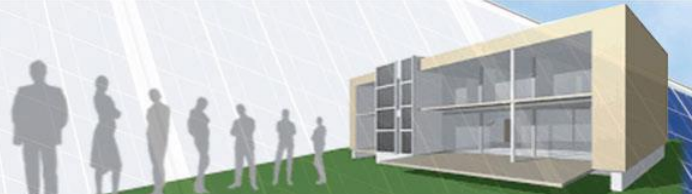
Architects:
Werner Schmidt &
Margaret Schwarz
Place: Dalsant, It
Year: 2003
Straw Bale House
Size: **3 story**





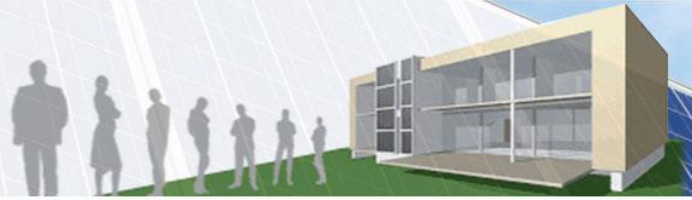
Architects:
AH3 Architects
Place: Ziersdorf, AT
Year: 2003
Straw Bale Kindergarden
(South Wall)
Passive House





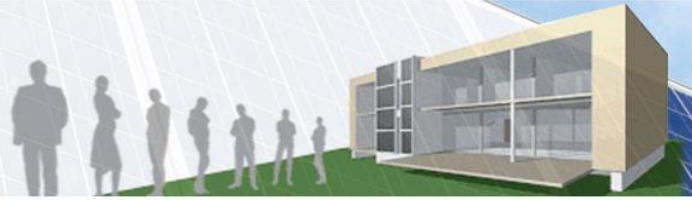
Architects:
AH3 Architects
Place: Ziersdorf, AT
Year: 2003
Straw Bale Kindergarden
(South Wall)
1st Passive House
Kindergarden



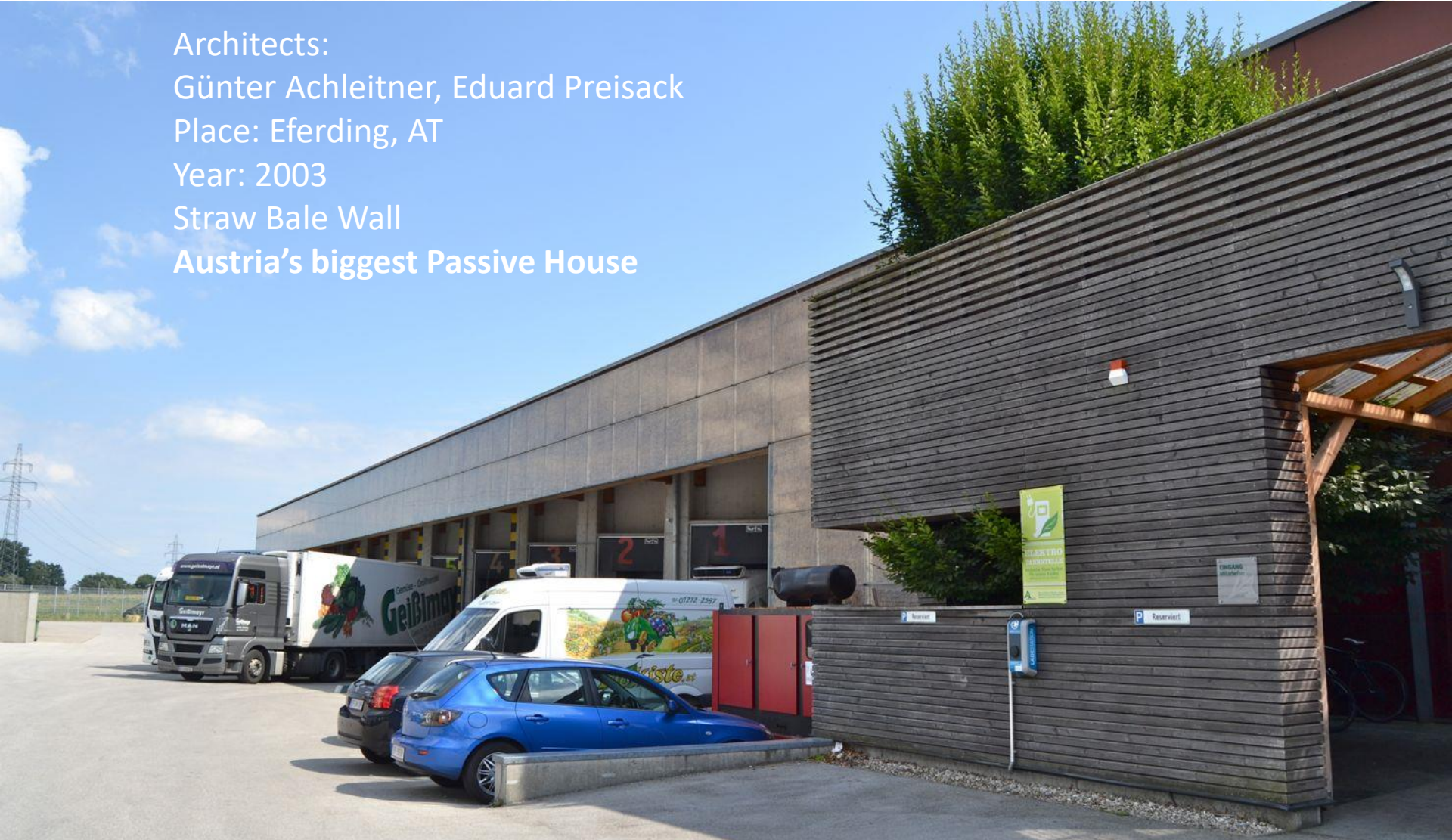


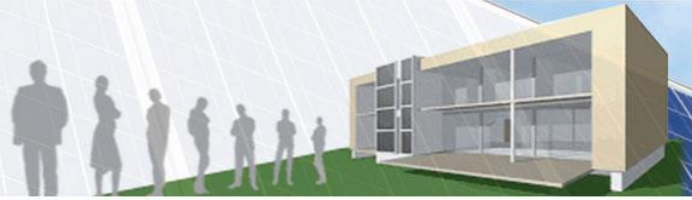
Architects:
Günter Achleitner, Eduard Preisack
Place: Eferding, AT
Year: 2003
Straw Bale Wall
Biohof Achleitner
Austria's biggest Passive House





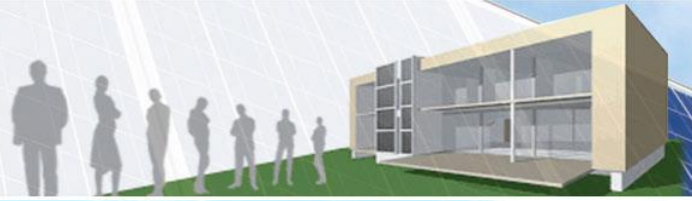
Architects:
Günter Achleitner, Eduard Preisack
Place: Eferding, AT
Year: 2003
Straw Bale Wall
Austria's biggest Passive House



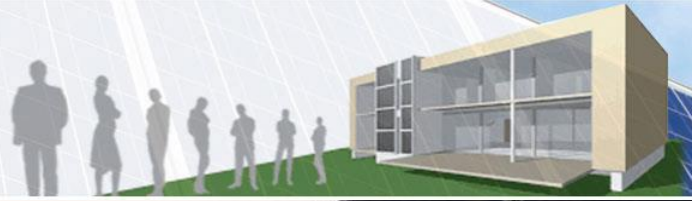


Architects:
Günter Achleitner, Eduard Preisack
Place: Eferding, AT
Year: 2003
Straw Bale Wall
Passive House



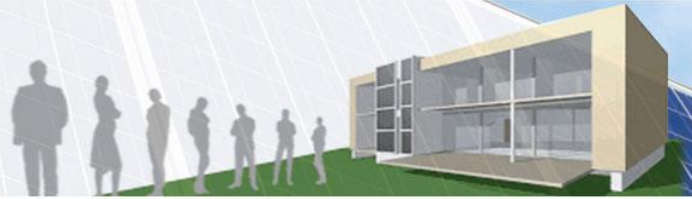


Architects:
Günter Achleitner, Eduard Preisack
Place: Eferding, AT
Year: 2003
Straw Bale Wall
Passive House

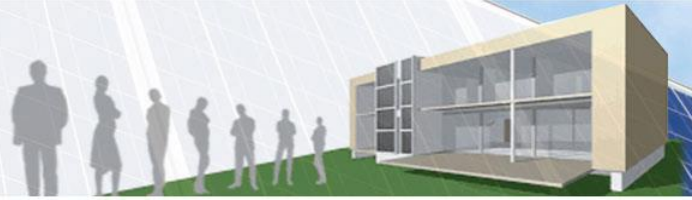


Amt der NÖ Landesregierung,
Ing. Wolfgang Tillich
Place: Allentsteig, AT
Year: 2004
strawbalehouse allentsteig
School/Gym



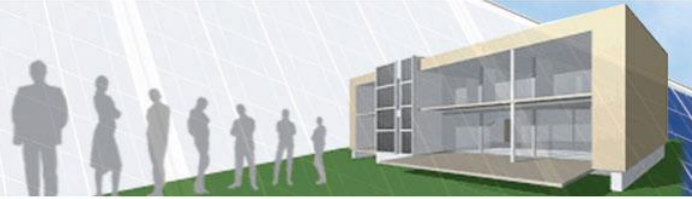


Amt der NÖ Landesregierung,
Ing. Wolfgang Tillich
Place: Allentsteig, AT
Year: 2004
strawbalehouse allentsteig
School/Gym



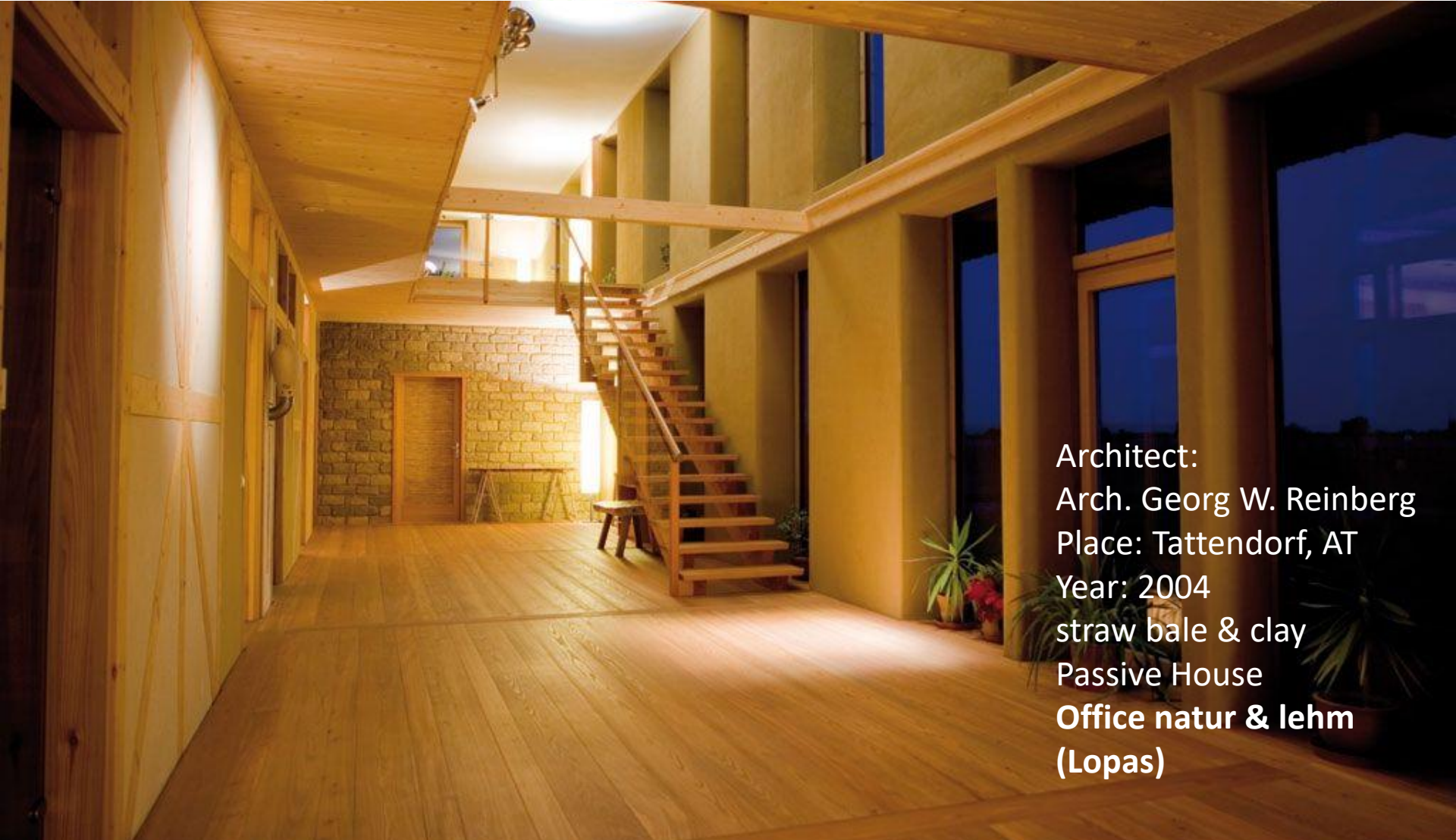
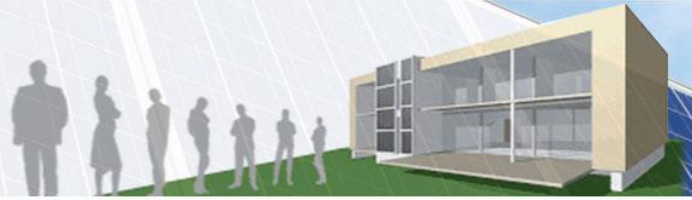
Architect:
Arch. Georg W. Reinberg
Place: Tattendorf, AT
Year: 2004
straw bale & clay
Passive House
Office natur & lehm
(Lopas)



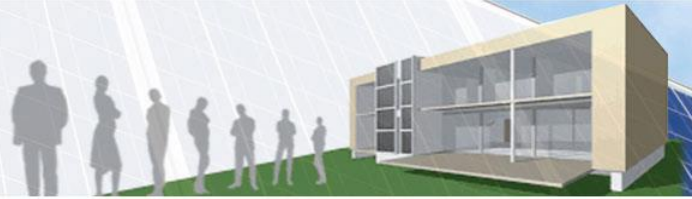


Architect:
Arch. Georg W. Reinberg
Place: Tattendorf, AT
Year: 2004
straw bale & clay
Passive House
Office natur & lehm
(Lopas)

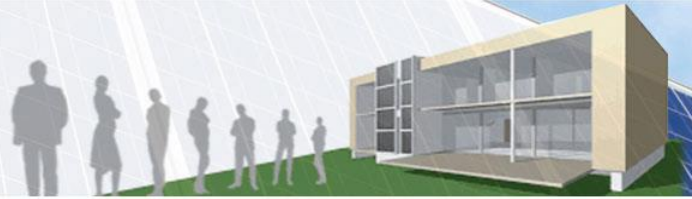




Architect:
Arch. Georg W. Reinberg
Place: Tattendorf, AT
Year: 2004
straw bale & clay
Passive House
Office natur & lehm
(Lopas)



Architect:
Georg W. Scheicher
Place: Böheimkirchen, AT
Year: 2005
straw bale wrapped
Passive House
TU Vienna/GrAT



STROHPOLIS

Am Waldrand zwischen dem Nordriegel und den Wohnhäusern der gegenüberliegenden Nachbarschaften wird „Strohpolis“ entstehen, ein mehrgeschossiges Strohballen-Wohnhaus mit ca. 500 m² Wohnfläche.
 Mit dem Pionier-Bau des bislang größten Strohballen-Hauses in Deutschland wird neuer Wohnraum im Ökodorf geschaffen. Forschungsprojekte werden dieses Projekt begleiten, um auch in Deutschland den Weg des Strohballen als Baustoff zu fördern.



Details zum Bau
 Strohpolis wird von Handwerkern des Ökodorfes in Zusammenarbeit mit regionalen Firmen gebaut. Der rechteckige Baukörper wird 3-geschossig und mit der Vorderseite zur Sonne ausgerichtet sein. Das ist energetisch günstiger, preiswerter und flächensparender als niedrigere oder weniger kompakte Bauten.
 Das Haus wird in Strohballen-Ständerbauweise gebaut. Die Strohballen werden wie überdimensionale Mauersteine in das Holzständerwerk eingesetzt und mit Lehm- und Kalkputzen verkleidet. Die Innenwände werden als leichte Trennwände mit Leichtlehmsteinen ausgeführt und mit dünnem Lehmputz verkleidet. Als Dachdämmung dienen ebenfalls lehmverputzte Strohballen.
 Die Bauweise wurde durch verschiedene Testphasen erprobt und bei einem Strohballenbau-Seminar, unter Anleitung des verantwortlichen Architekten, an einem kleinen Modellhaus anschaulich vermittelt.

Strohpolis wird Platz für Wohngemeinschaften von 2 bis ca. 10 Menschen (12 bis 18 m²) leben werden und gemeinsam die große Wohnküche (38 m²) und die Gemeinschaftsräume nutzen. Anderen Bedürfnissen entsprechend wird es kleine 1-Zi.-Appartments mit separaten Bädern geben. Das komplette Erdgeschoss ist barrierefrei, so dass Menschen mit Gehbehinderung hier leben können.

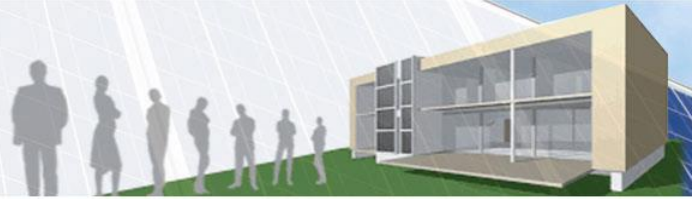
Ressourcensparendes Bauen
 Ein weiterer Aspekt von „Nachhaltig Bauen“: Dieser Grundriss fördert den Kontakt zwischen den Bewohnern und macht die ressourcensparende gemeinsame Nutzung von Räumen möglich. Abstellräume werden auf ein Minimum reduziert.



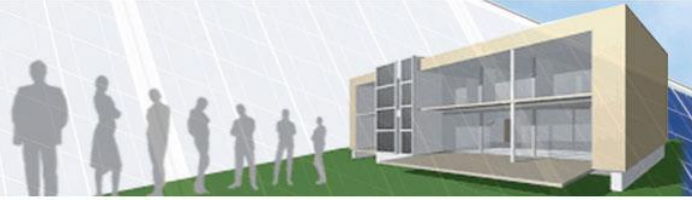
Strohballen als Baustoff
 Strohballen sind ein nachhaltiger Dämmstoff, der regional verfügbar ist. Ein Teil des Strohs stammt 15 km entfernt aus Nieps. Die LPG Bandau wird 2003 die restliche Menge, ohne Verwendung von Spritzmitteln, anbauen.
 Die Strohballen werden zur Dämmung der Außenwände, der Fußböden und des Daches verwendet und mit Lehm verputzt. Weitere Informationen zu Strohballen im Regio-Haus.

Haustechnik
 Strohpolis wird an die Holzbohle eine größere Photovoltaikanlage installiert, die bei optimaler Sonneneinstrahlung ca. 60 kWh (=5.000 W) liefert. Der Regio-Haus 70 Nordriegel 1.90 und damit Niedrigenergiestandard.
 Der Bau von Strohpolis wird im Regio-Haus 70 Nordriegel 1.90 und damit Niedrigenergiestandard.

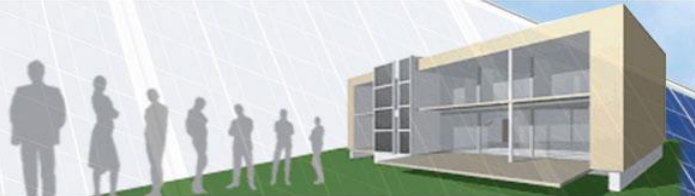
Architect:
 Dirk Scharmer
 Place: Siebenlinden, DE
 Year: 2005
 straw bale house
 Strohpolis
 Multifamilyhouse



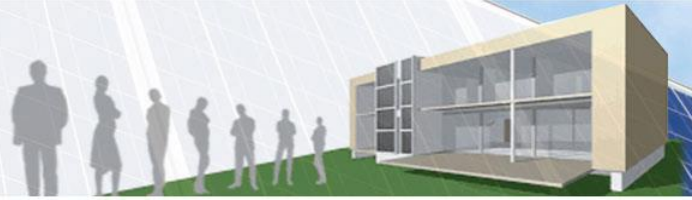
Architect:
Dirk Scharmer
Place: Siebenlinden, DE
Year: 2005
straw bale house
Strohpolis
Multifamilyhouse



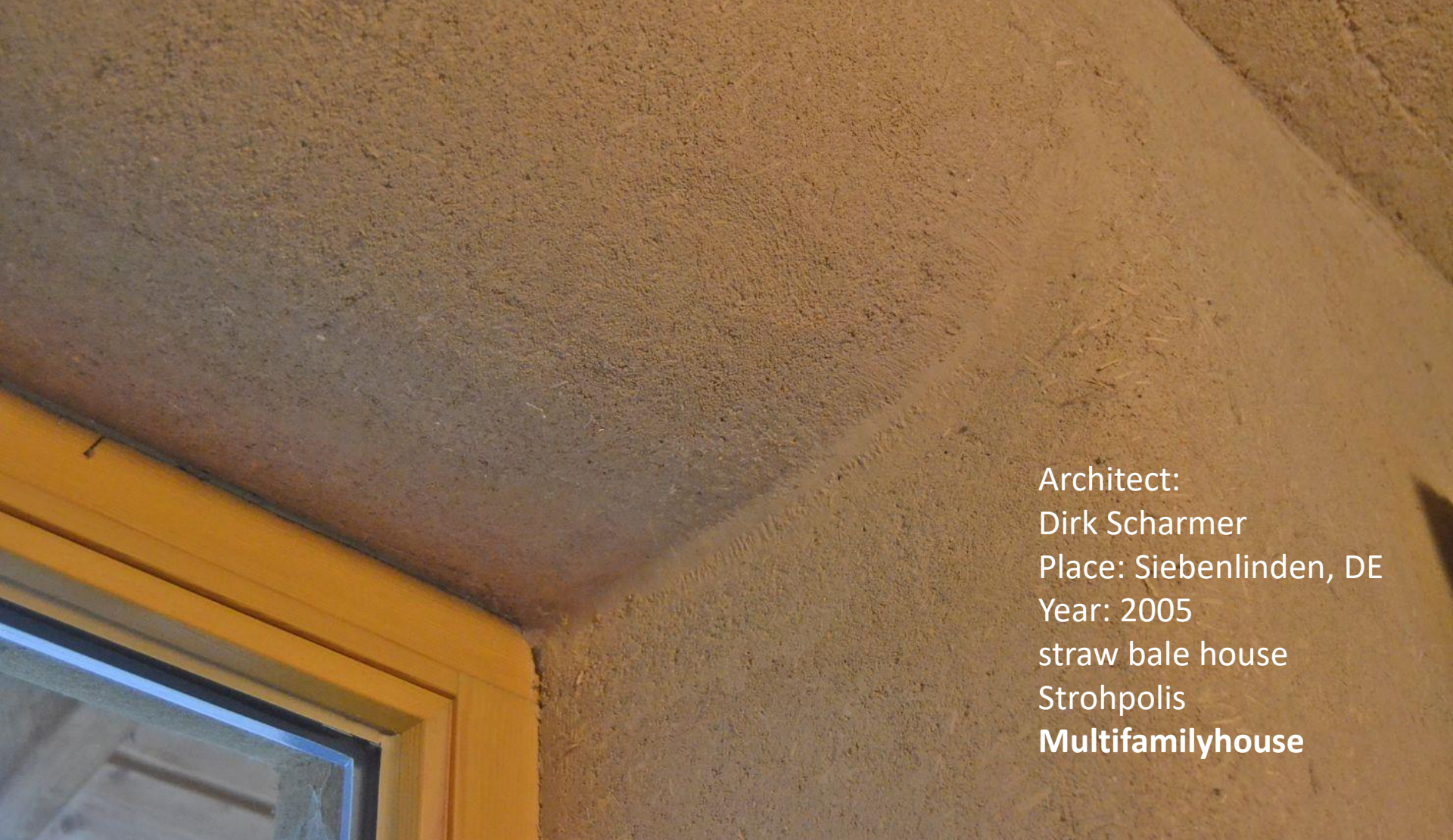
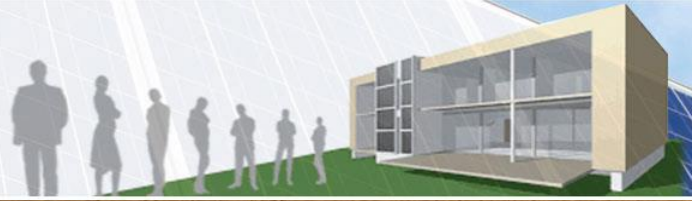
Architect:
Dirk Scharmer
Place: Siebenlinden, DE
Year: 2005
straw bale house
Strohpolis
Multifamilyhouse



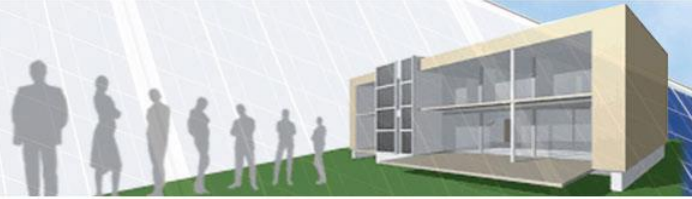
Architect:
Dirk Scharmer
Place: Siebenlinden, DE
Year: 2005
straw bale house
Strohpolis
Multifamilyhouse



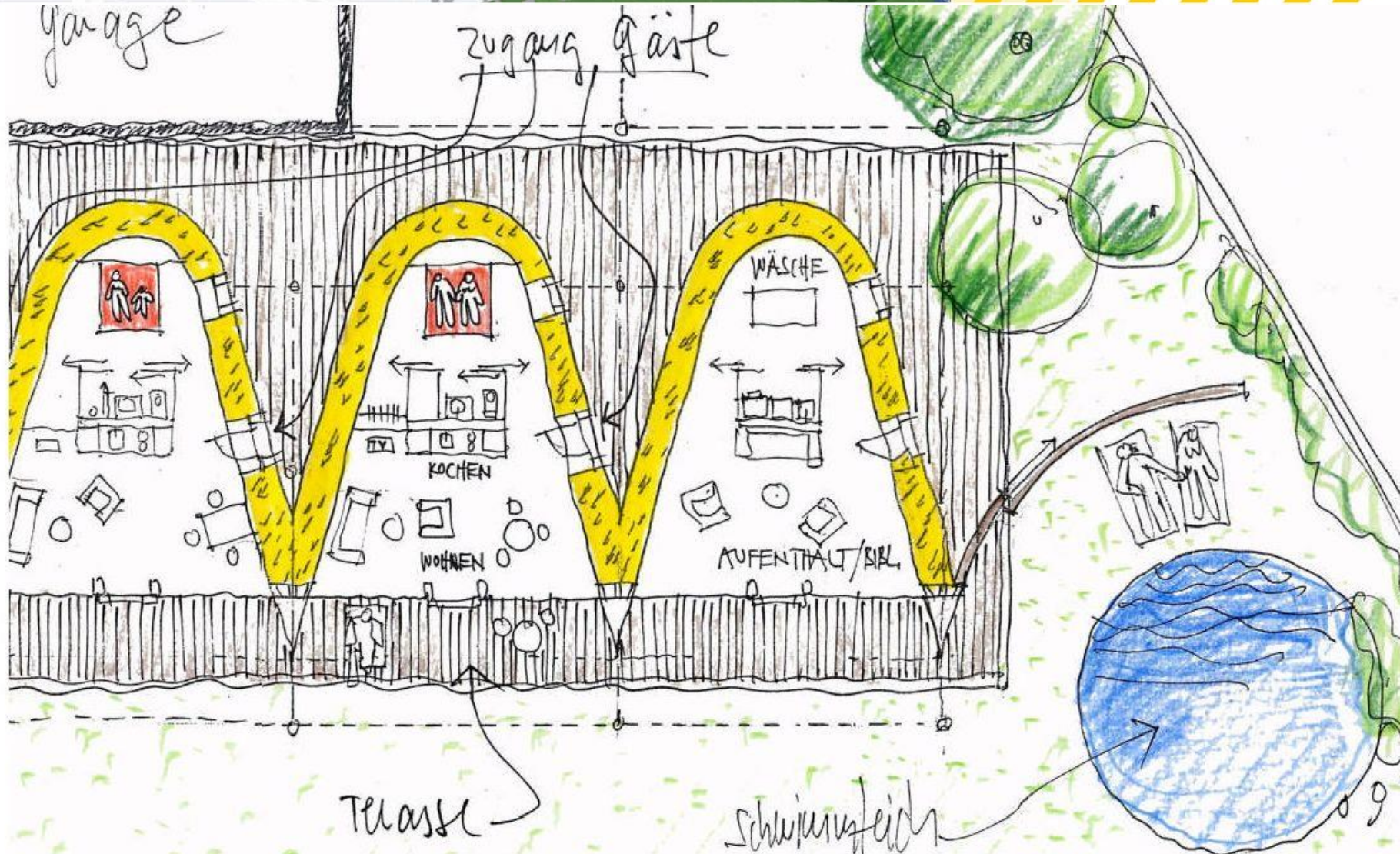
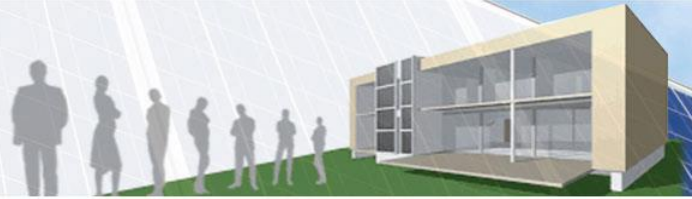
Architect:
Dirk Scharmer
Place: Siebenlinden, DE
Year: 2005
straw bale house
Strohpolis
Multifamilyhouse

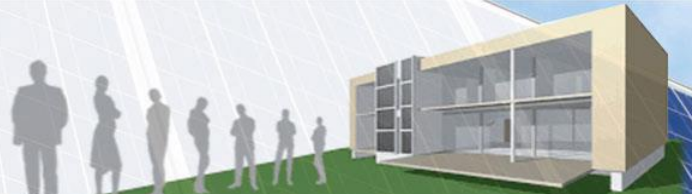


Architect:
Dirk Scharmer
Place: Siebenlinden, DE
Year: 2005
straw bale house
Strohpolis
Multifamilyhouse

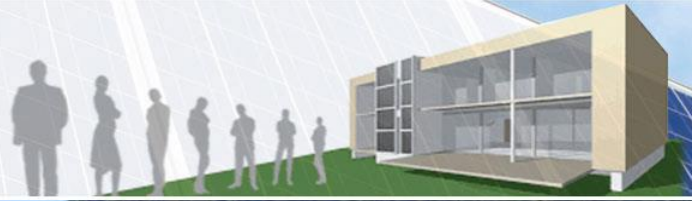


Architect:
Dirk Scharmer
Place: Siebenlinden, DE
Year: 2005
straw bale house
Strohpolis
Multifamilyhouse

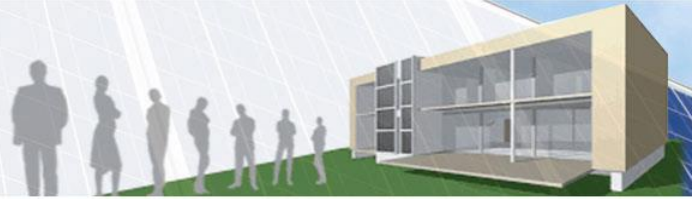




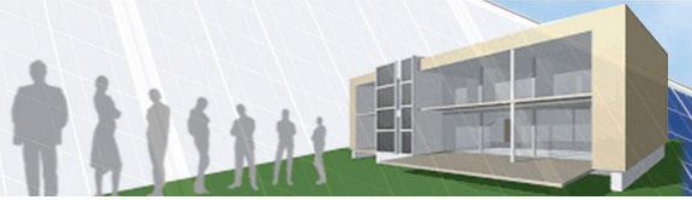
Architect:
 Werner Schmidt
 Margaret Schwarz
 Place: Lana, IT
 Year: 2006
 Esserhof/big bale
 Apartments



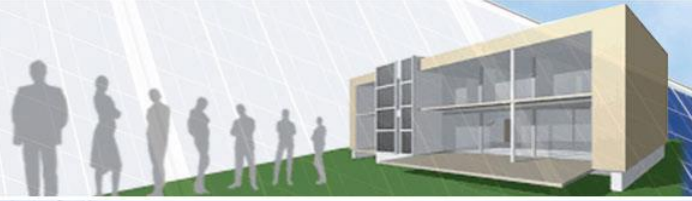
Architect:
Werner Schmidt
Margaret Schwarz
Place: Lana, IT
Year: 2006
Esserhof/big bale
Apartments



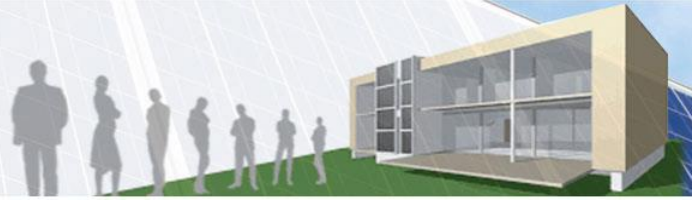
Architect:
Werner Schmidt
Margaret Schwarz
Place: Lana, IT
Year: 2006
Esserhof/big bale
Apartments



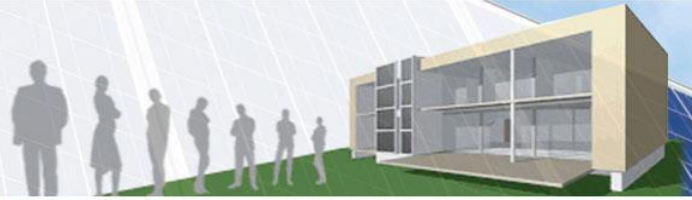
Architect:
Gernot Minke,
Beate Möller
Place: Tamera, PT
Year: 2006
30 m long, 8 m high
straw bale house
Aula/Auditorium



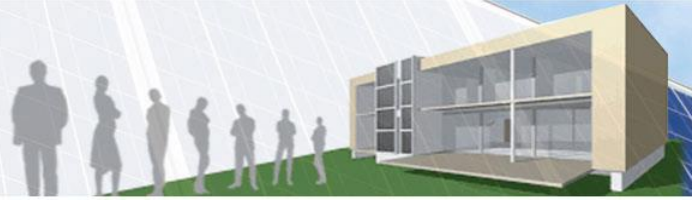
Architect:
Gernot Minke,
Beate Möller
Place: Tamera, PT
Year: 2006
30 m long, 8 m high
straw bale house
Aula/Auditorium



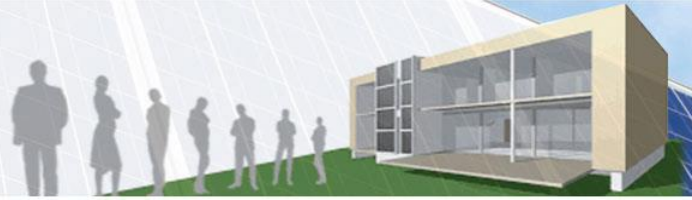
Architect:
Gernot Minke,
Beate Möller
Place: Tamera, PT
Year: 2006
30 m long, 8 m high
straw bale house
Aula/Auditorium



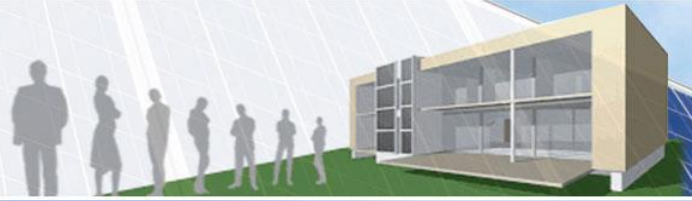
Architect:
Gernot Minke,
Beate Möller
Place: Tamera, PT
Year: 2006
30 m long, 8 m high
straw bale house
Aula/Auditorium



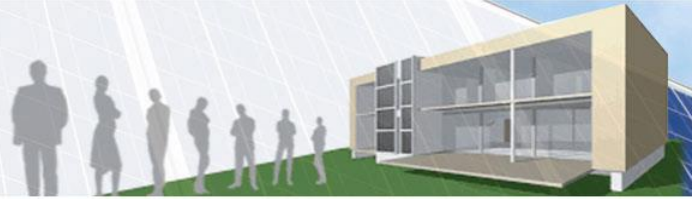
Architect:
Gernot Minke,
Beate Möller
Place: Tamera, PT
Year: 2006
30 m long, 8 m high
straw bale house
Aula/Auditorium



Architect:
Gernot Minke,
Beate Möller
Place: Tamera, PT
Year: 2006
30 m long, 8 m high
straw bale house
Aula/Auditorium

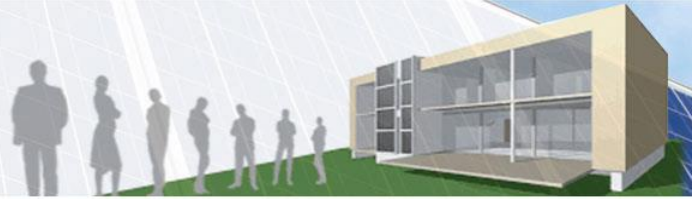


Architect:
Gernot Minke,
Beate Möller
Place: Tamera, PT
Year: 2006
30 m long, 8 m high
straw bale house
Aula/Auditorium

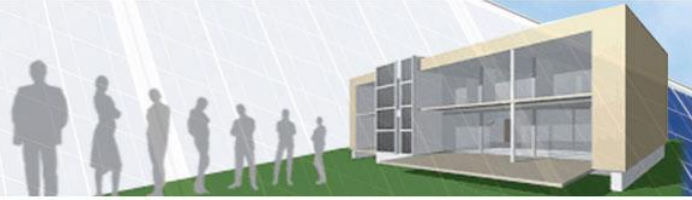


Architect:
Steen Møeller,
Place: Brenderup, DK
Year: 2007
straw bale house
Primary School

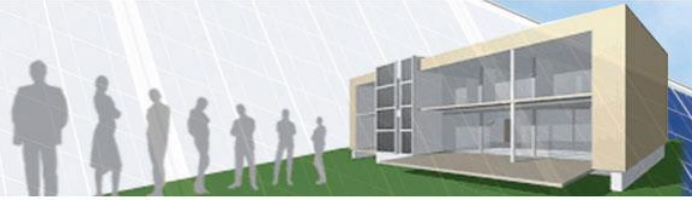




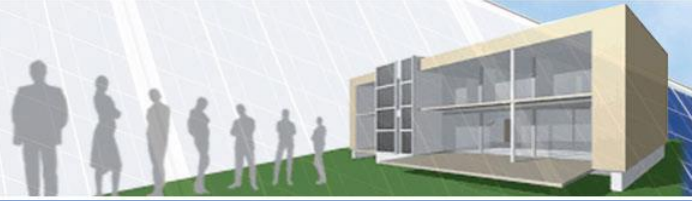
Architect:
Steen Møeller,
Place: Brenderup, DK
Year: 2007
straw bale house
Primary School



Architect:
Ricardo Higuera,
Place: Zaragoza, ES
Year: 2008
Prefab straw bale walls
El Faro



Architect:
Ricardo Higuera,
Place: Zaragoza, ES
Year: 2008
Prefab straw bale walls
El Faro



Architect:

René Dalmeijer,

Place: Amsterdam, NL

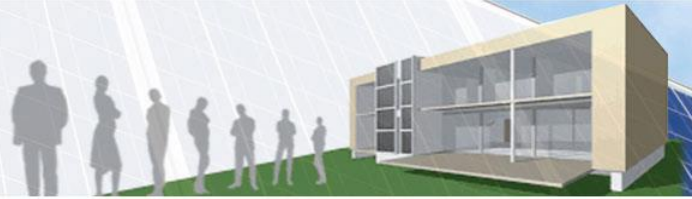
Year: 2008-2009

5-story house, 280 m²,

Prefab straw bale walls

Huis van Stro





Architect:

René Dalmeijer,

Place: Amsterdam, NL

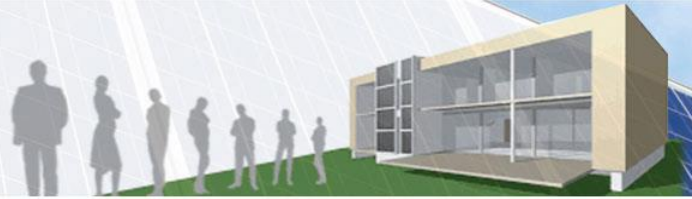
Year: 2008-2009

5-story house, 280 m²,

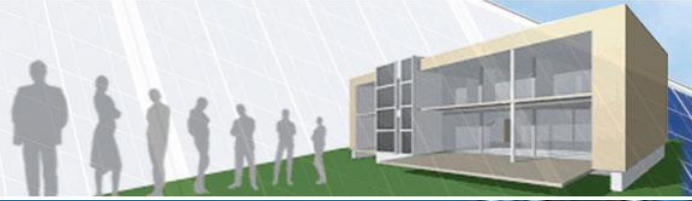
Prefab straw bale walls

Huis van Stro





Architect:
René Dalmeijer,
Place: Amsterdam, NL
Year: 2008-2009
5-story house, 280 m²,
Prefab straw bale walls
Huis van Stro



Architect:

René Dalmeijer,

Place: Amsterdam, NL

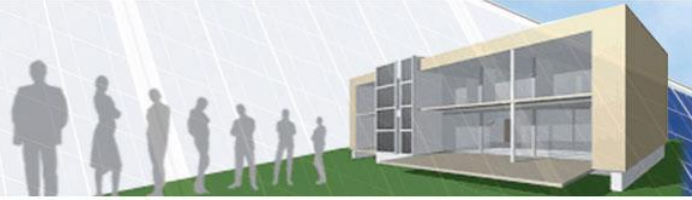
Year: 2008-2009

5-story house, 280 m²,

Prefab straw bale walls

Huis van Stro





Architect:

René Dalmeijer,

Place: Amsterdam, NL

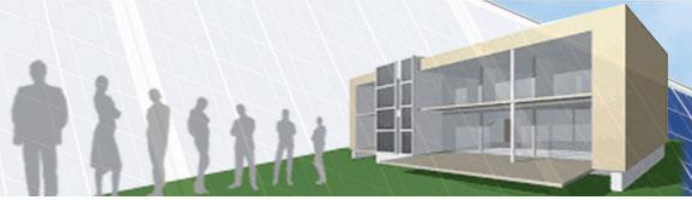
Year: 2008-2009

5-story house, 280 m²,

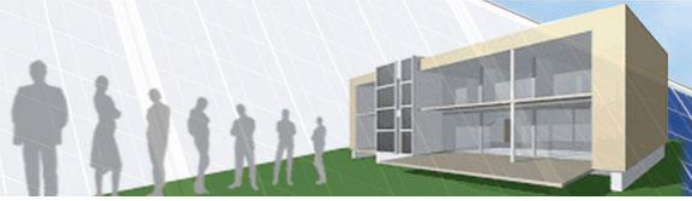
Prefab straw bale walls

Huis van Stro





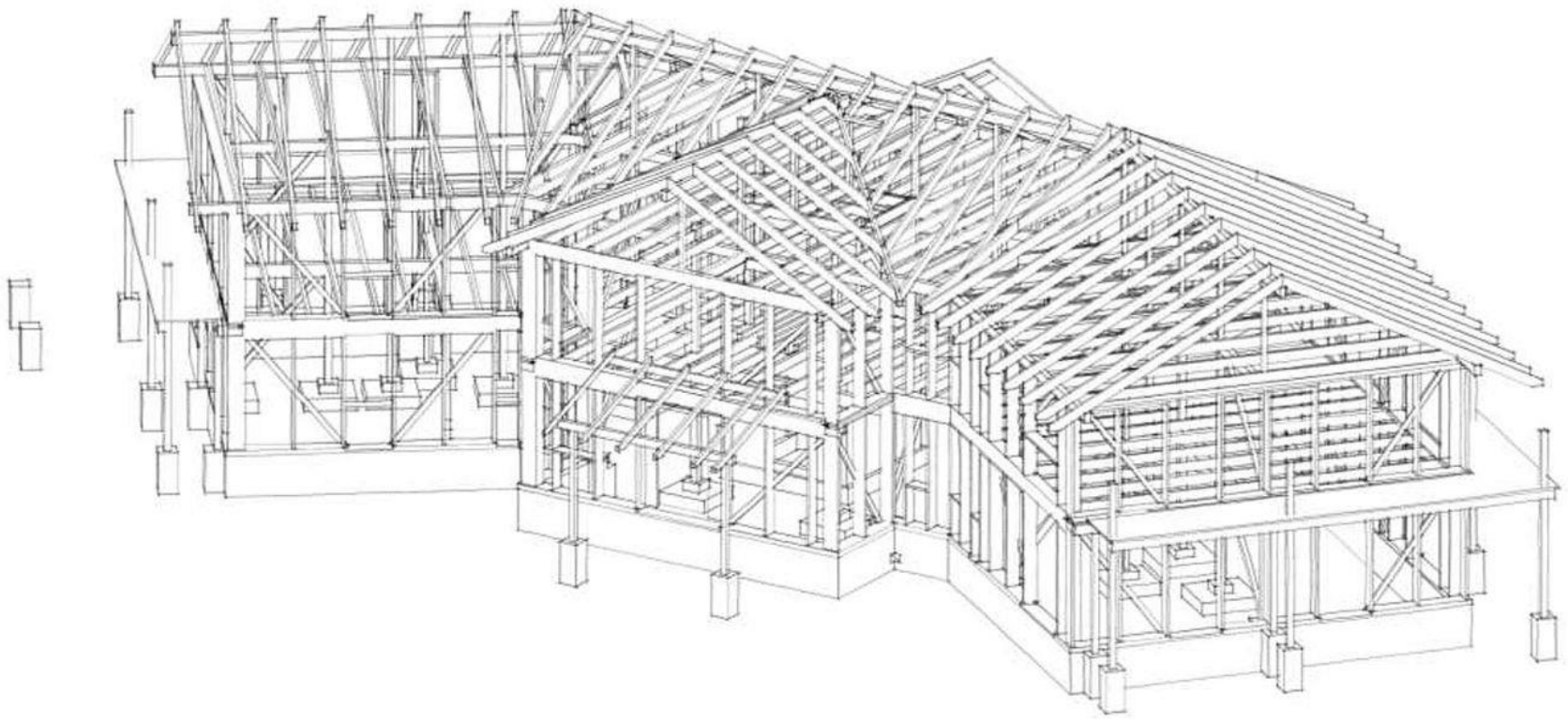
Architect:
Dirk Scharmer,
Place: Siebenlinden, DE
Year: 2009
Community Building
straw bale walls
multifamilyhouses

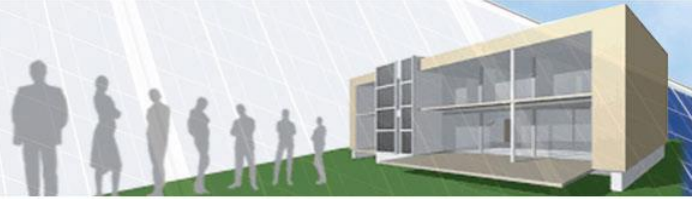


architecture Architektur

source | quelle: arch. dirk scharmer

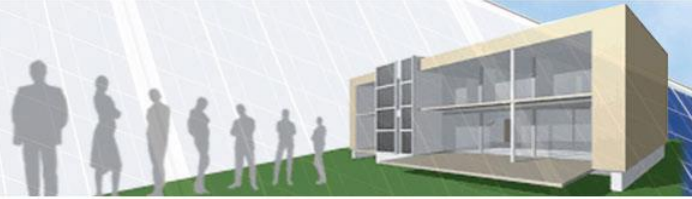
example „Windrose“ | Beispiel Haus „Windrose“



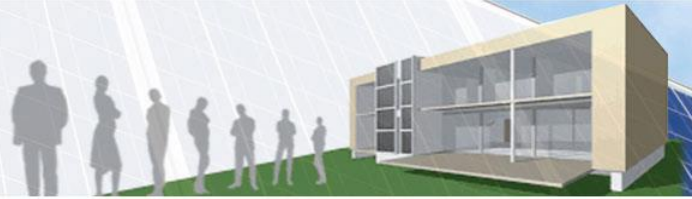


Architect:
degen hettenbach & partner
Place: Therwil, CH
Year: 2010
3-story house, 529 m²,
Prefab straw bale walls
Multifamilyhouse
Minergie-Standard



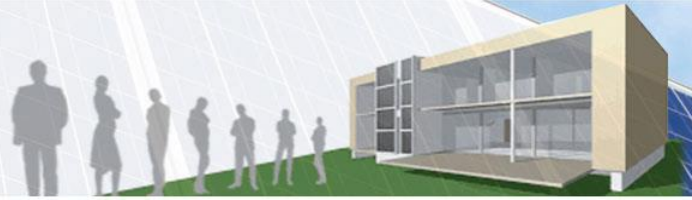


Architect:
degen hettenbach & partner,
Place: Therwil, CH
Year: 2010
3-story house, 529 m2,
Prefab straw bale walls
Multifamilyhouse
Minergie-Standard

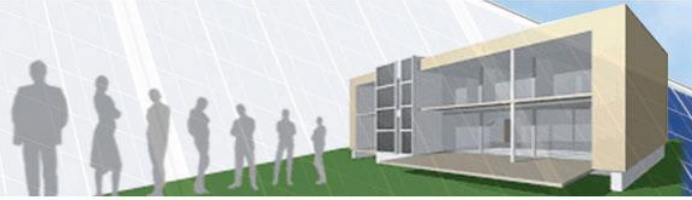


Architect:
degen hettenbach & partner,
Place: Therwil, CH
Year: 2010
3-story house, 529 m²,
Prefab straw bale walls
Multifamilyhouse
Minergie-Standard



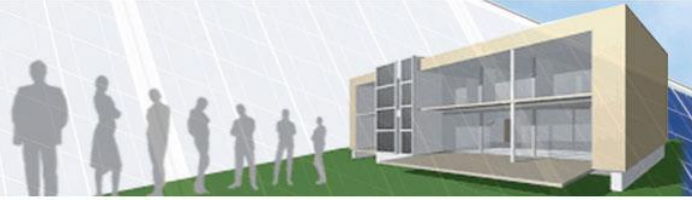


Architect:
Werner Schmidt,
Place: Therwil, CH
Year: 2010
Size: 217 m2,
straw bale dome
Hydro AG

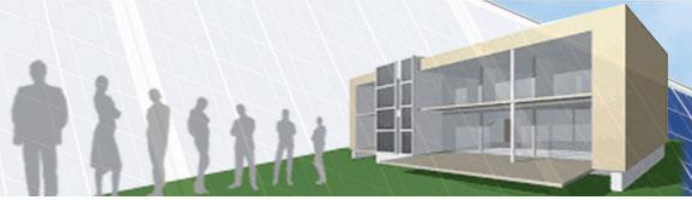


Architect:
Werner Schmidt,
Place: Therwil, CH
Year: 2010
Size: 217 m²,
straw bale dome
Hydro AG

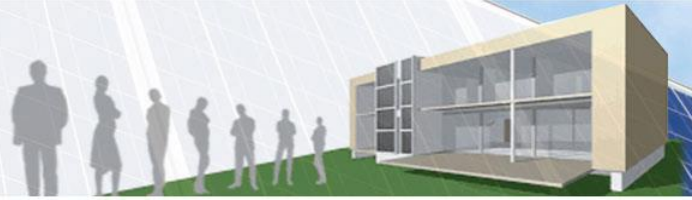




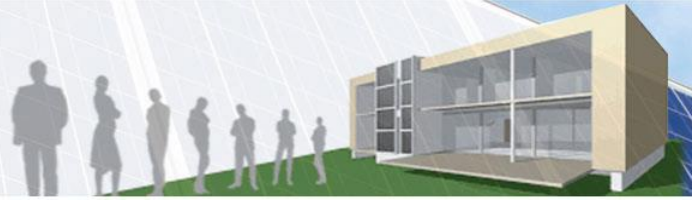
Architect:
Werner Schmidt,
Place: Therwil, CH
Year: 2010
Size: 217 m2,
straw bale dome
Hydro AG



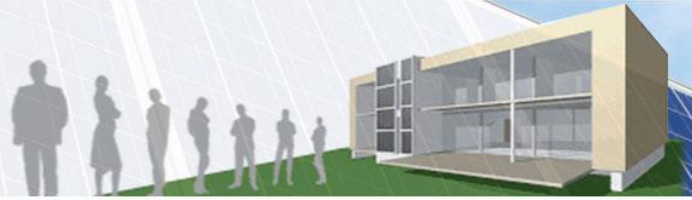
Architect:
Werner Schmidt,
Place: Therwil, CH
Year: 2010
Size: 217 m²,
straw bale dome
Hydro AG



Architect:
Werner Schmidt,
Place: Therwil, CH
Year: 2010
Size: 217 m2,
straw bale dome
Hydro AG

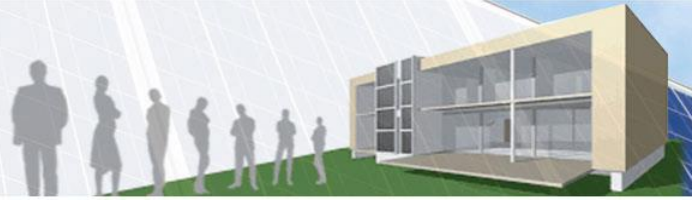


Architect:
Werner Schmidt,
Place: Therwil, CH
Year: 2010
Size: 217 m²,
straw bale dome
Hydro AG



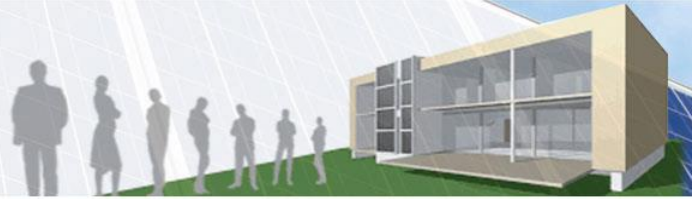
Architect:
Werner Schmidt,
Place: Therwil, CH
Year: 2010
Size: 217 m²,
straw bale dome
Hydro AG





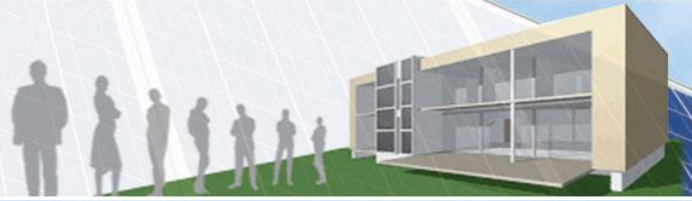
Architect:
Ha Ha Architects
Place: Vandancourt, FR
Year: 2010
straw bale house
**La Damassine-
Maison des Vergers
(Orchards House)**

photocredit: PMA

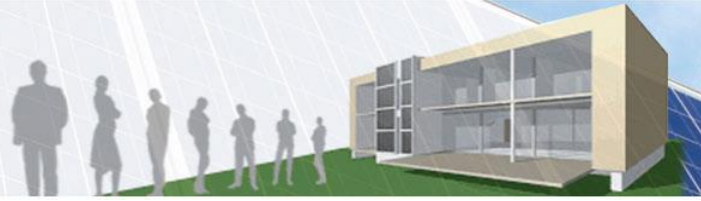


Architect:
Ha Ha Architects
Place: Vandancourt, FR
Year: 2010
straw bale house
**La Damassine-
Maison des Vergers
(Orchards House)**

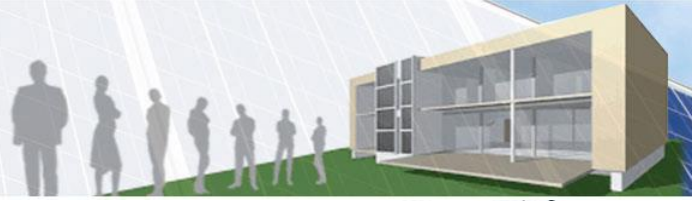
photocredit: PMA



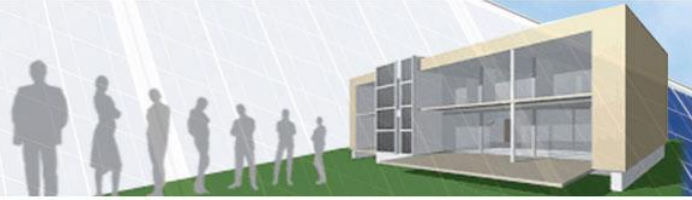
Straw bale cafe | Modcell | Hewitt Studios



Architect:
WPP-Kol Architekt BNA
Place: Haps, NL
Year: 2011
straw bale house
StroHotel Aalshof

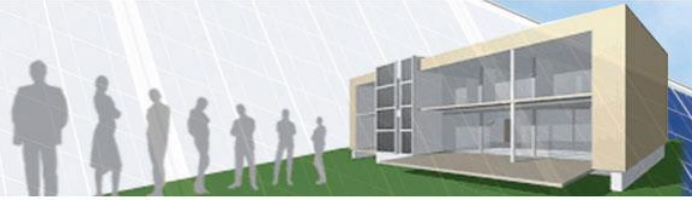


Architect:
WPP Koł Architekt BNA
Place: Haps, NL
Year: 2011
straw bale house
StroHotel Aalshof



Architect:
WPP Kol Architekt BNA
Place: Haps, NL
Year: 2011
straw bale house
StroHotel Aalshof





Architect:

Make Architects

Place: Nottingham, NL

Year: 2011

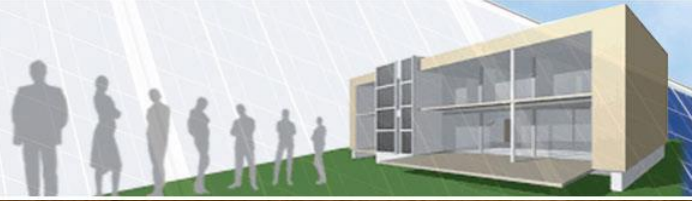
straw bale modules

Size: 3.100 m²

Gateway Building

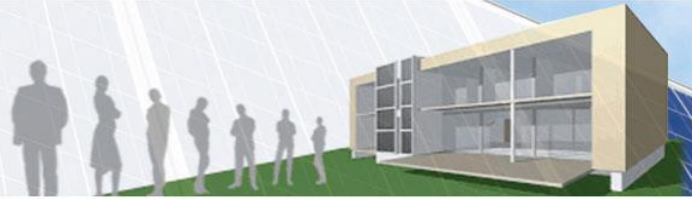
University Nottingham



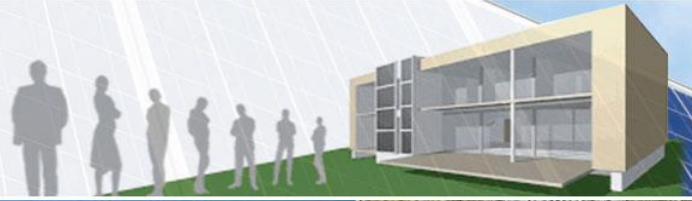


Architect:
Make Architects
Place: Nottingham, NL
Year: 2011
straw bale modules
Size: 3.100 m2
Gateway Building
University Nottingham

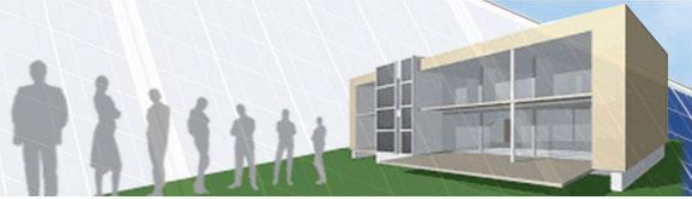




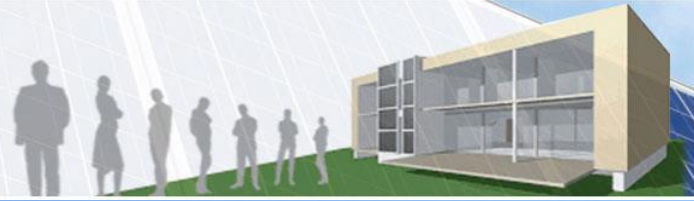
GATEWAY BUILDING | MAKE Architects



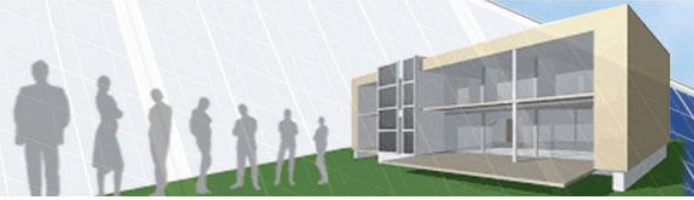
Architect:
Maarja Kask, Karli Luik,
Ralf Loock, Pelle-Sten Viiburg
Place: Tallin, Estonia
Year: 2010-2011
straw bale modules
Temporary unplastered
No99 Straw Theatre



Architect:
Maarja Kask, Karli Luik,
Ralf Loock, Pelle-Sten Viiburg
Place: Tallin, Estonia
Year: 2010-2011
straw bale modules
Temporary unplastered
No99 Straw Theatre



Architect:
Maarja Kask, Karli Luik,
Ralf Loock, Pelle-Sten Viiburg
Place: Tallin, Estonia
Year: 2010-2011
straw bale modules
Temporary unplastered
No99 Straw Theatre



Architect: Loma

Place: Ludwigstein, DE

Year: 2012

straw bale house

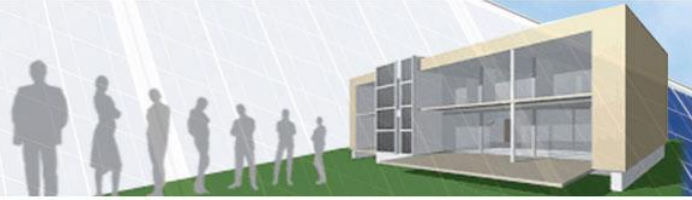
Enno Narten Building

Youth-Castle Ludwigstein

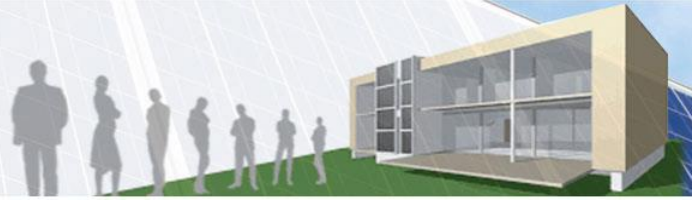


**Straw bale building Training
for European Professionals**





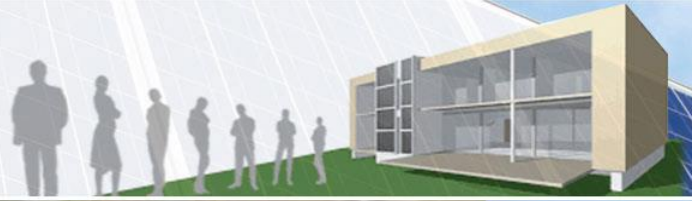
Architect: Loma
Place: Ludwigstein, DE
Year: 2012
straw bale house
Enno Narten Building
Youth-Castle Ludwigstein



Architect: Loma
Place: Ludwigstein, DE
Year: 2012
straw bale house

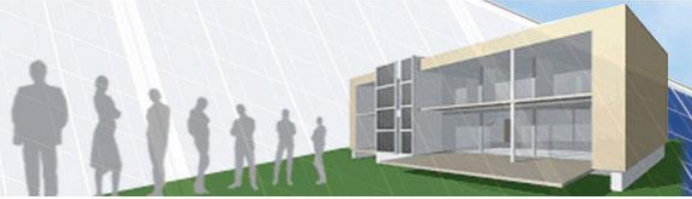
Enno Narten Building
Youth-Castle Ludwigstein





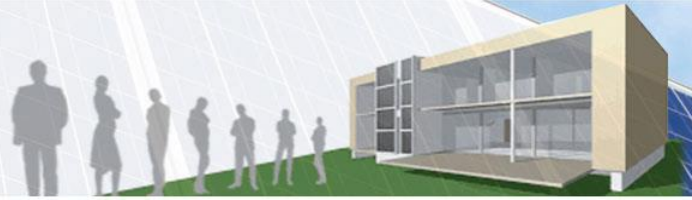
Architect: Werner Schmidt
Place: Nax, CH
Year: 2012
Size: 335 m²
Modular straw bale hotel
Maya Guesthouse



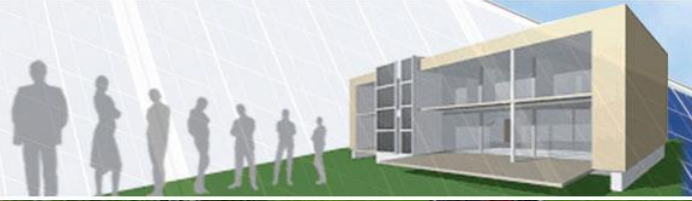


Architect: Werner Schmidt
Place: Nax, CH
Year: 2012
Size: 335 m²
Modular straw bale hotel
Maya Guesthouse



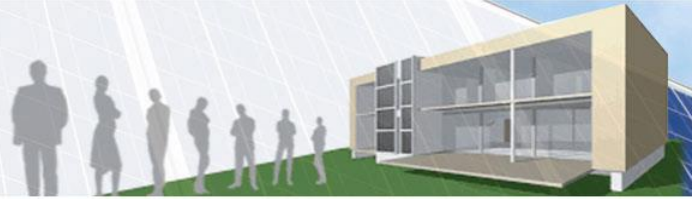


Architect: Werner Schmidt
Place: Nax, CH
Year: 2012
Size: 335 m²
Modular straw bale hotel
Maya Guesthouse

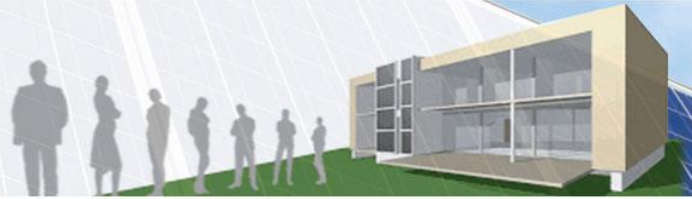


Architect: Werner Schmidt
Place: Nax, CH
Year: 2012
Size: 335 m²
Modular straw bale hotel
Maya Guesthouse

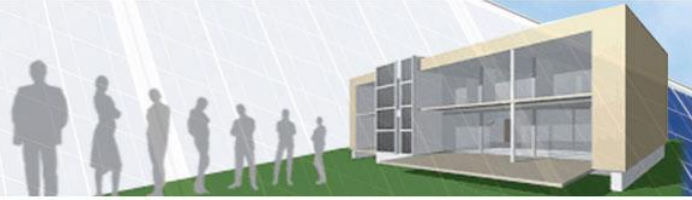




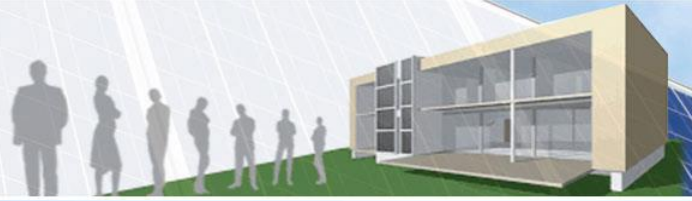
Architect: Werner Schmidt
Place: Nax, CH
Year: 2012
Size: 335 m2
Modular straw bale hotel
Maya Guesthouse



Architect:
Anne Thorne Architects
Built by Straw Works
Place: Haringay, UK
Year: 2012
Size: 600 m²
Haringey Eco Hub

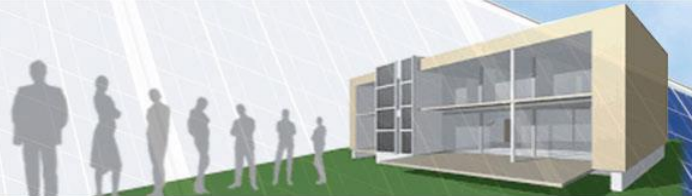


Architect: Newlands Community Association
Place: Bradford, UK
Year: 2012
Size: 2787 m2 (2 buildings)
Modular straw bale – Modcell
Inspire Bradford Business Park



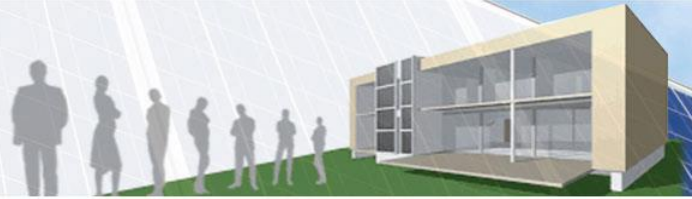
Architect:
Newlands Community Association
Place: Bradford, UK
Year: 2012
Size: 2787 m2 (2 buildings)
Modular straw bale – Modcell
Inspire Bradford Business Park





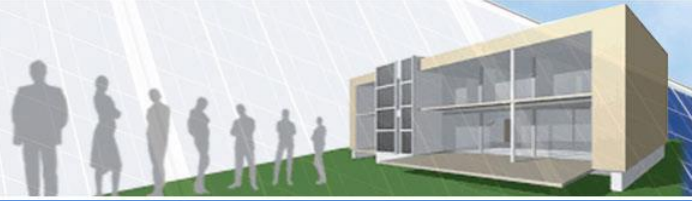
Architect:
Bet Gaujard
Place: Avignon, FR
Year: 2012
Size: 419 m2
straw bale wrapping
Montessori School



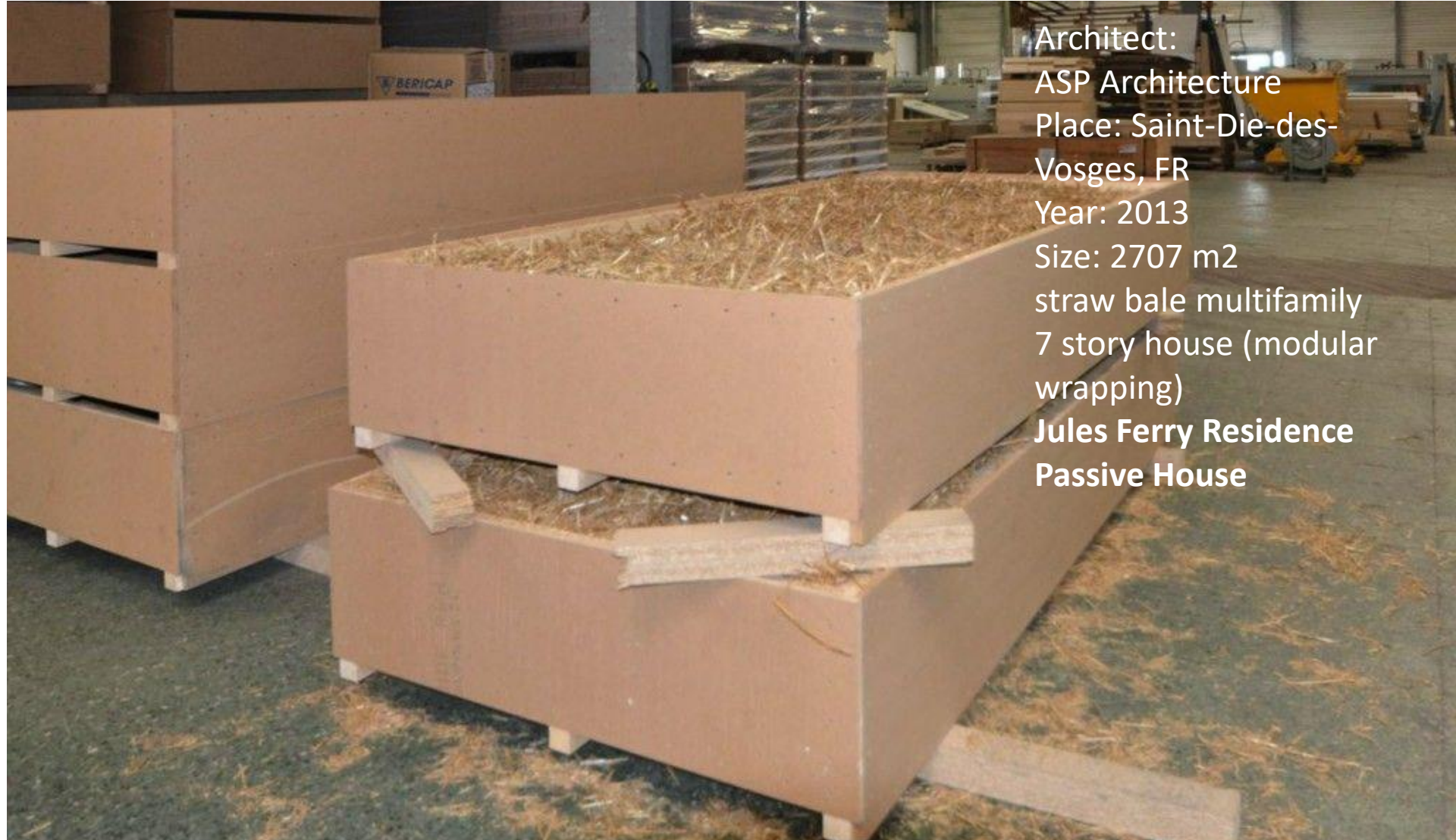
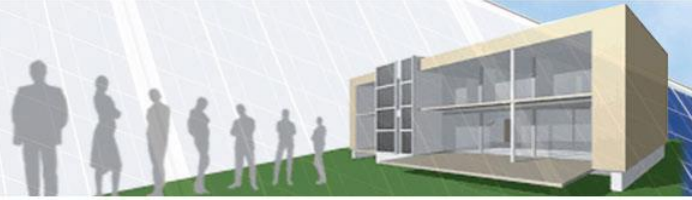


Architect:
Bet Gaujard
Place: Avignon, FR
Year: 2012
Size: 419 m2
straw bale wrapping
Montessori School

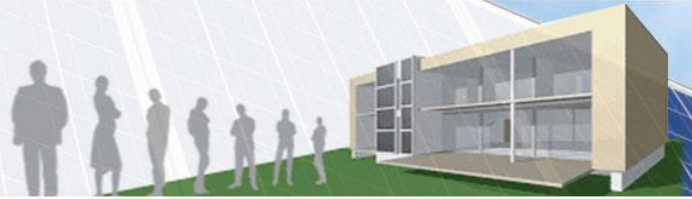




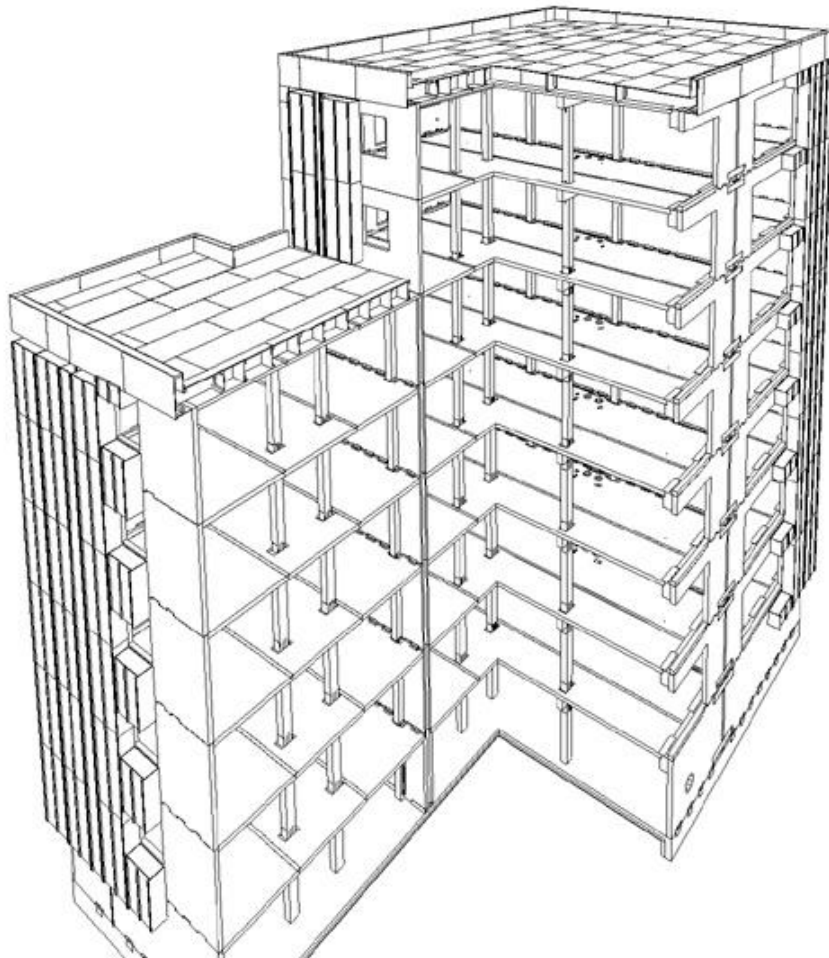
Architect:
ASP Architecture
Place: Saint-Die-des-
Vosges, FR
Year: 2013
Size: 2707 m²
straw bale multifamily
7 story house (modular
wrapping)
Jules Ferry Residence
Passive House



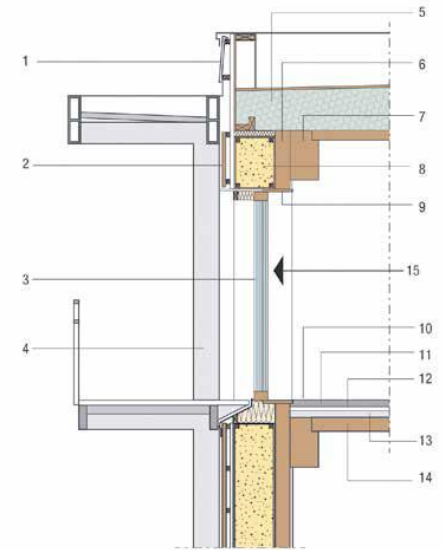
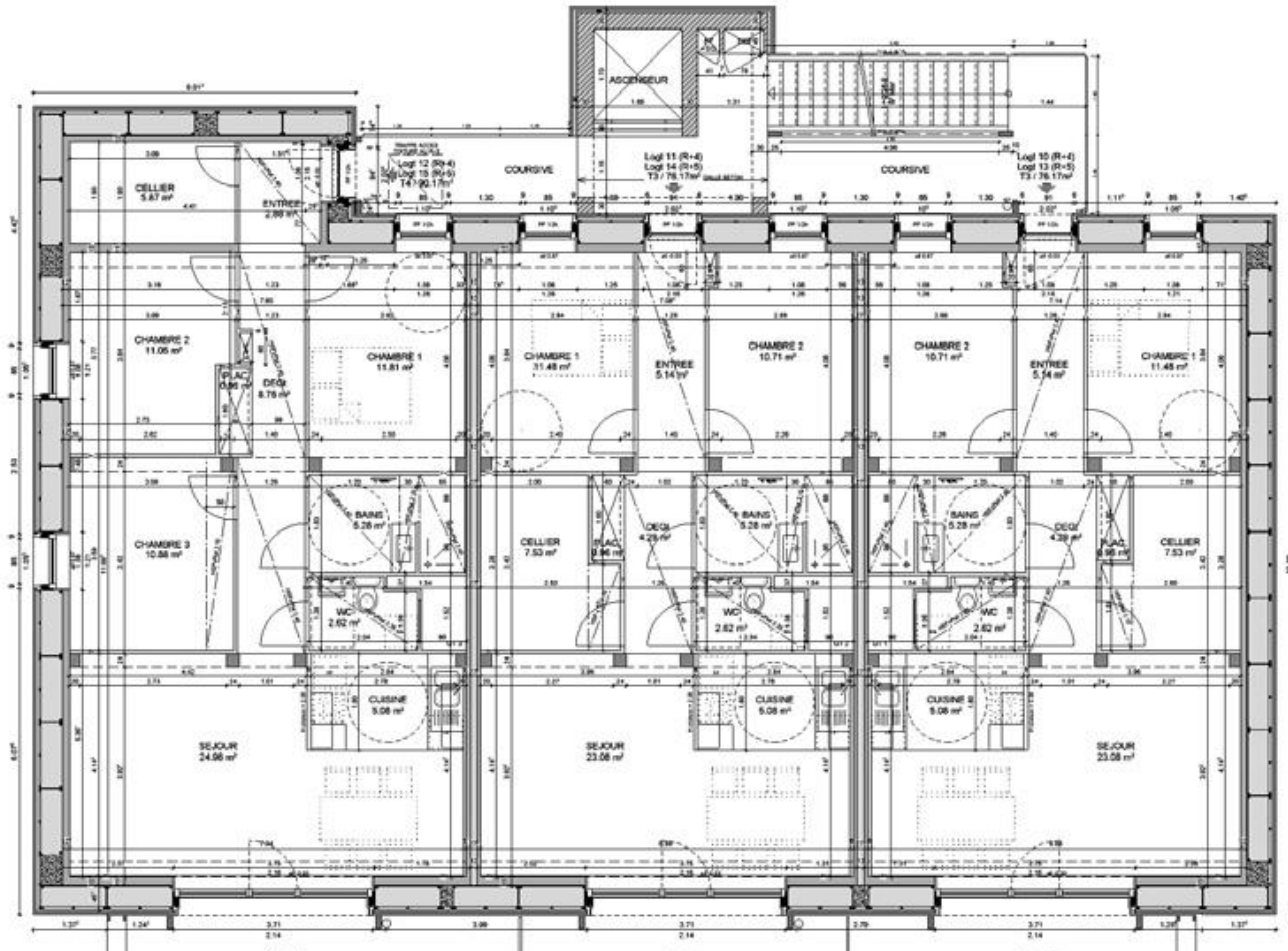
Architect:
ASP Architecture
Place: Saint-Die-des-
Vosges, FR
Year: 2013
Size: 2707 m²
straw bale multifamily
7 story house (modular
wrapping)
Jules Ferry Residence
Passive House



Architect:
ASP Architecture
Place: Saint-Die-des-
Vosges, FR
Year: 2013
Size: 2707 m²
straw bale multifamily
7 story house (modular
wrapping)
Jules Ferry Residence
Passive House



**Jules Ferry Residence, erdbebensichere KLH-Konstruktion,
Isometrie mit dreigeteiltem Grundriss**



Jules Ferry Residence: Grundriss Regelgeschoss; Fassadenschnitt: 45 cm dicke Dämmkästen umhüllen das Tragwerk des im Passivhausstandard geplanten Gebäudes.



Jules Ferry Residence, 7stöckiges Wohnhaus, Frankreich
Beidseitig vorge setzte Stahlkonstruktion für Balkon/Stiegenhaus



Jules Ferry Residence,

Netto-WNFl. gesamt: 2 707 m²

Gesamtkosten: 4 265 000 €

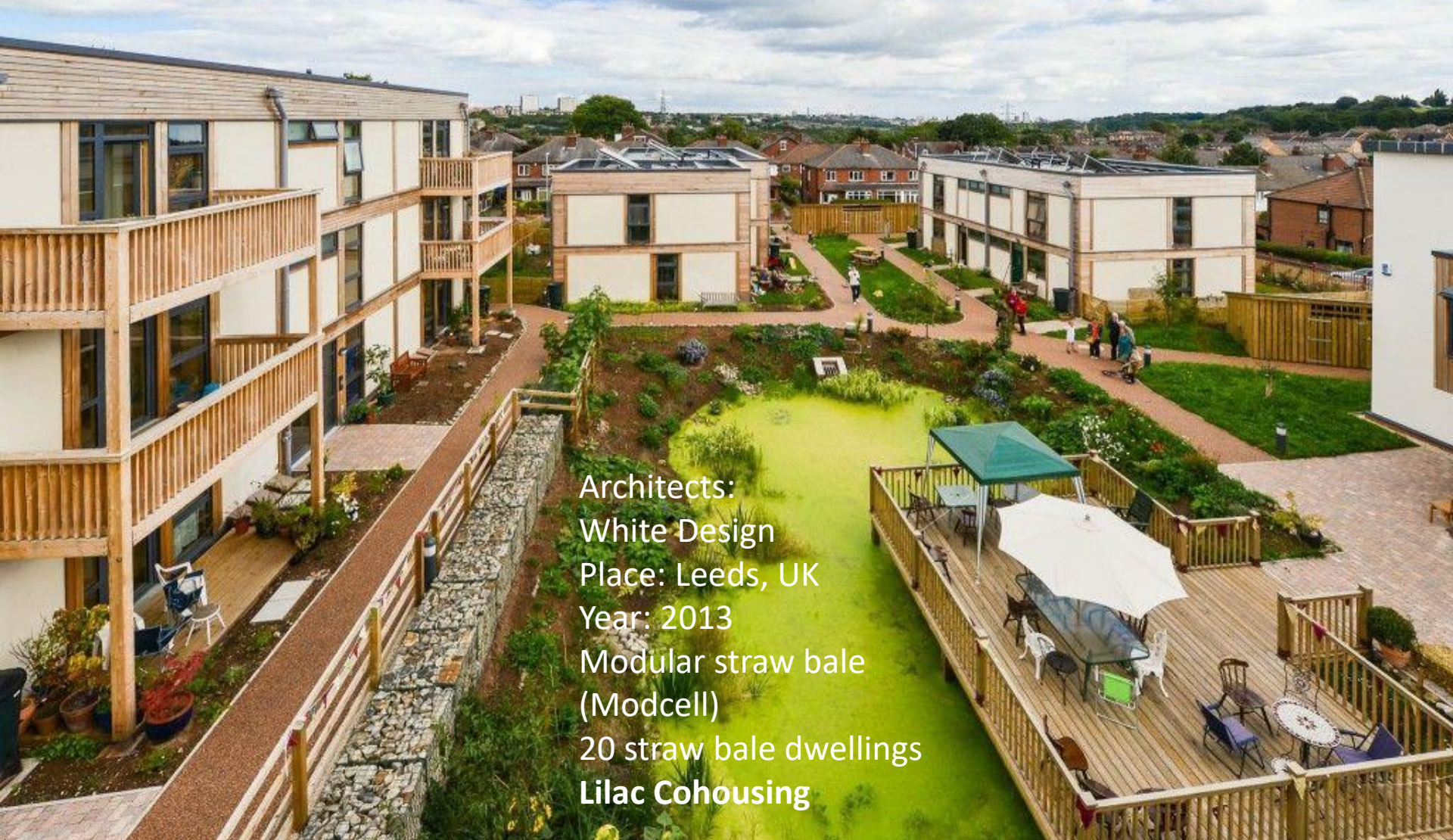
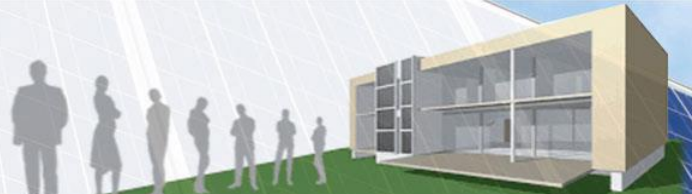
Anzahl Wohneinheiten: 26

Kosten /m²: 1 576 €

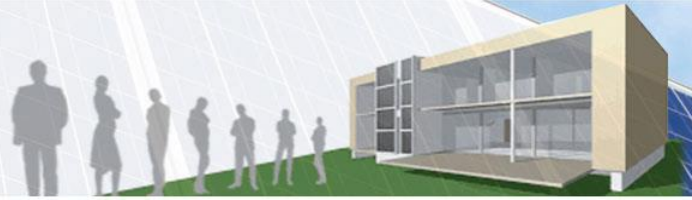
Kosten/Wohneinheit: 164 038 €



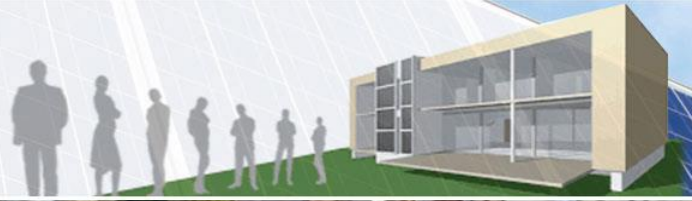
**Jules Ferry Residence, 7stöckiges Wohnhaus, Frankreich
Aus Brandschutzgründen mit hinterlüfteten Ziegeln verplankt**



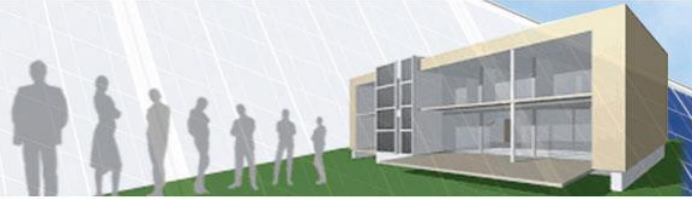
Architects:
White Design
Place: Leeds, UK
Year: 2013
Modular straw bale
(Modcell)
20 straw bale dwellings
Lilac Cohousing



Architects:
Sonia Cortesse,
Bernard Dufournet
Place: Montreuill, Paris, FR
Year: 2013
straw bale walls
Size: 5241 m²
Montreuill School



Architects:
Sonia Cortesse,
Bernard Dufournet
Place: Montreuill, Paris, FR
Year: 2013
straw bale walls
Size: 5241 m2
Montreuill School



Architects:

Sonia Cortesse,
Bernard Dufournet

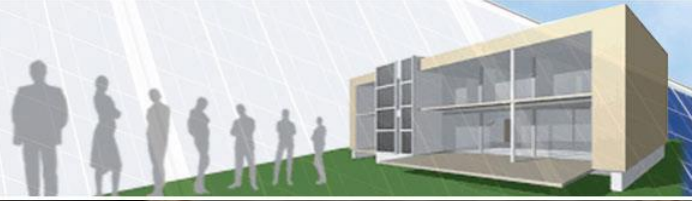
Place: Montreuil, Paris, FR

Year: 2013

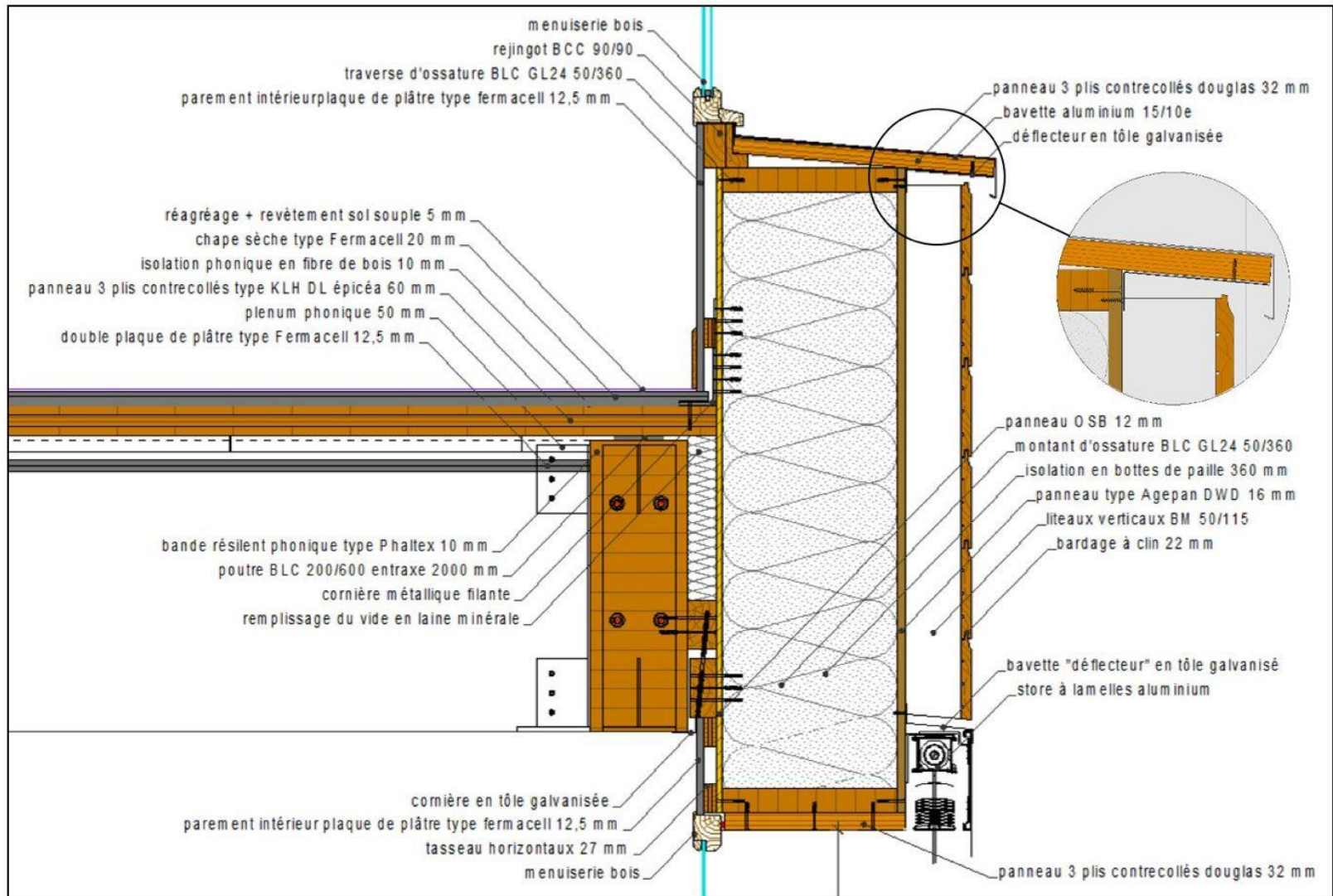
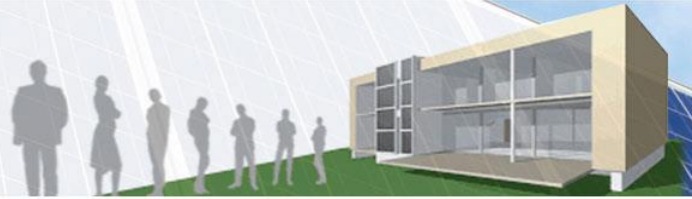
straw bale walls

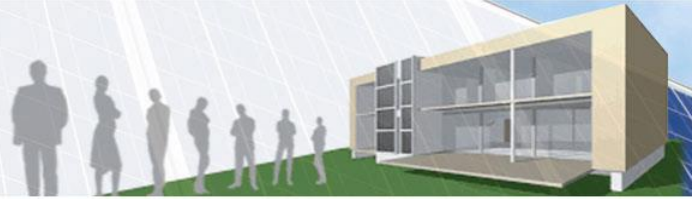
Size: 5241 m2

Montreuil School

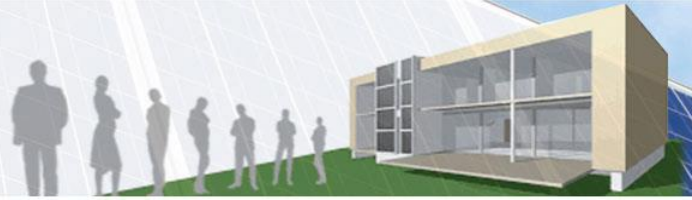


Architects:
Sonia Cortesse,
Bernard Dufournet
Place: Montreuill, Paris, FR
Year: 2013
straw bale walls
Size: 5241 m2
Montreuill School





Architects:
Sonia Cortesse,
Bernard Dufournet
Place: Montreuill, Paris, FR
Year: 2013
straw bale walls
Size: 5241 m2
Montreuill School



Architects:

Sonia Cortesse,

Bernard Dufournet

Place: Issy du Moulineaux, FR

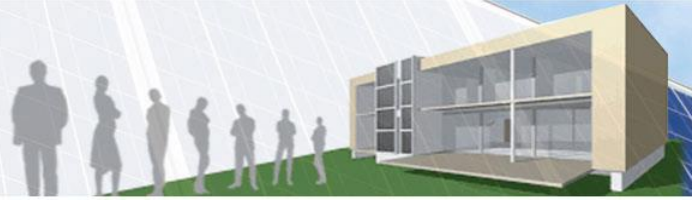
Year: 2013

straw bale walls (modules)

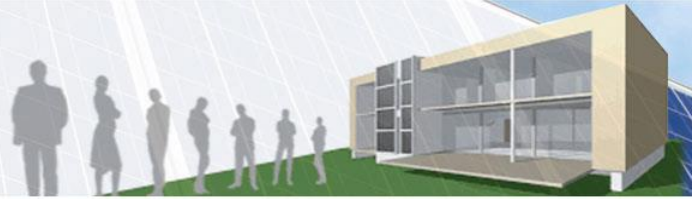
Size: 5238 m²

School Louise Michel



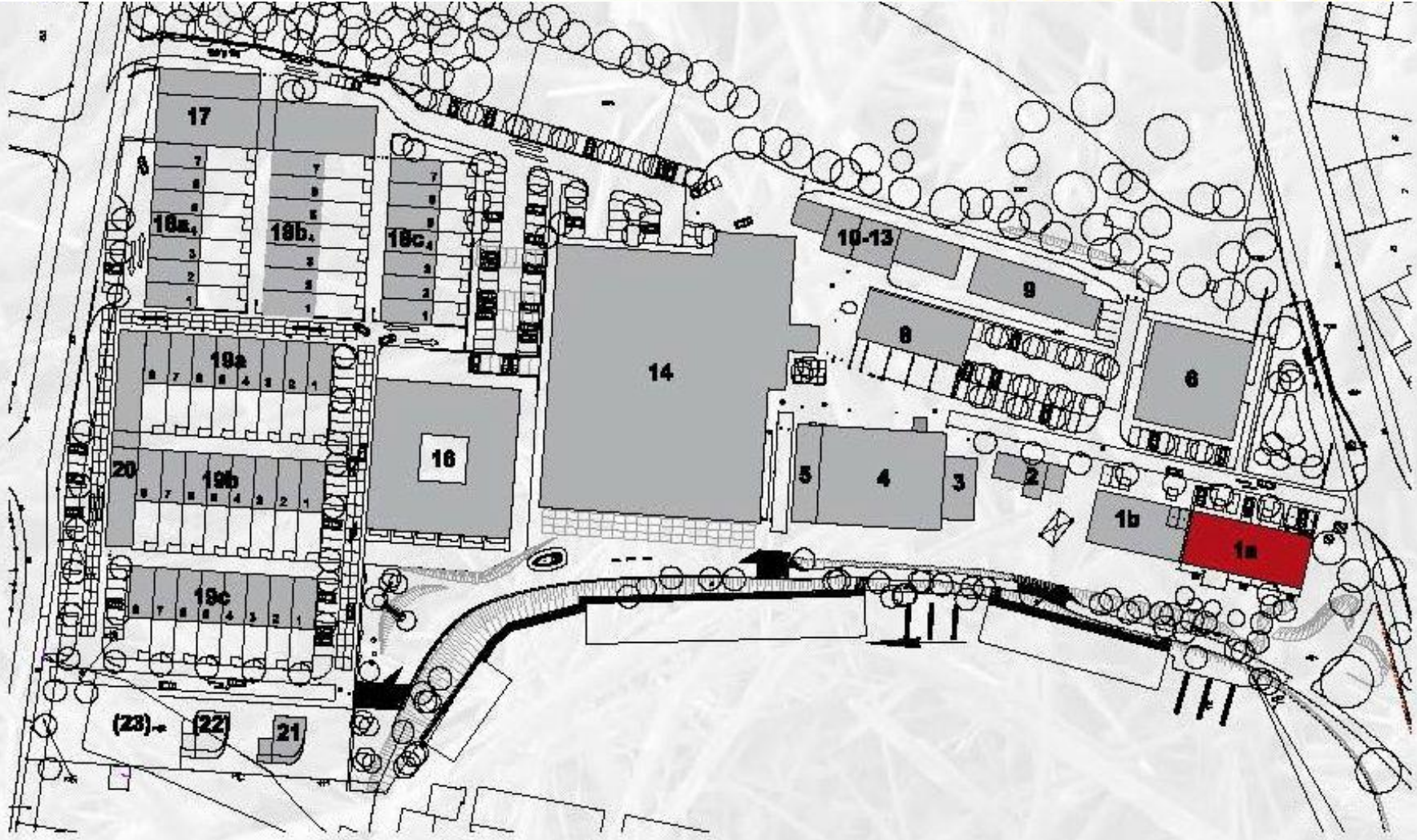
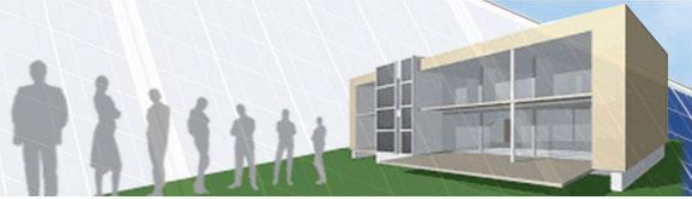


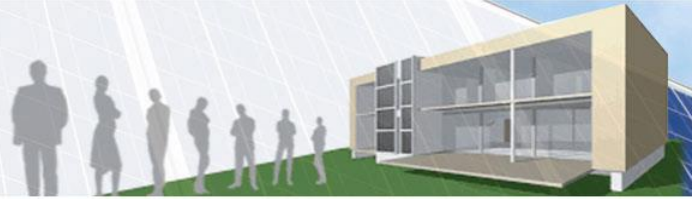
Architects:
Sonia Cortesse,
Bernard Dufournet
Place: Issy du Moulineux, FR
Year: 2013
straw bale walls (modules)
Size: 5238 m²
School Louise Michel



Architects:
Schelfbauhütte
Place: Schwerin, DE
Year: 2014-
straw bale wrapping
300 different houses
Alte Brauerei Schwerin







Systemdarstellung

Architect/System:

Schelfbauhütte

Place: Schwerin, DE

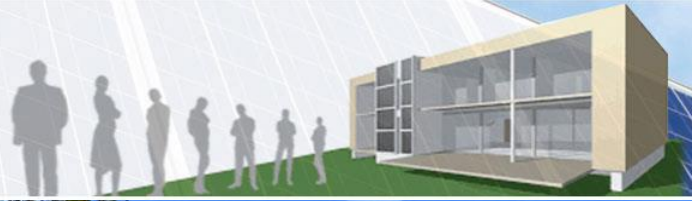
Year: 2014-

straw bale wrapping

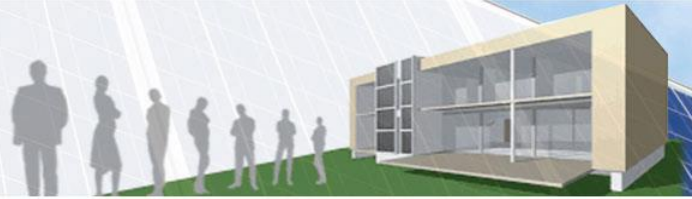
300 different houses

Alte Brauerei Schwerin



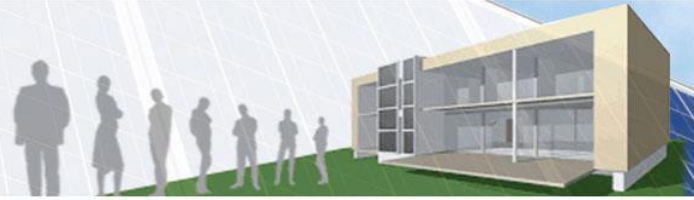


Architects:
Schelfbauhütte
Place: Schwerin, DE
Year: 2014-
straw bale wrapping
300 different houses
Alte Brauerei Schwerin



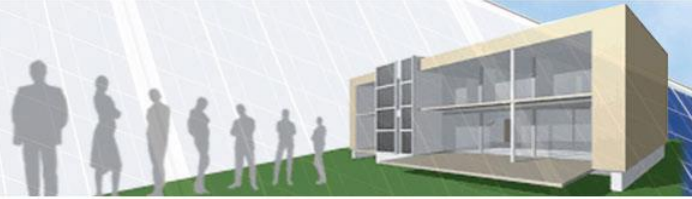
Architect:
Atelier Werner Schmidt
Place: Trimbach, CH
Year: 2015
Size: 3145 m2
straw bale wrapping/
thermal renovation
Complemedis AG





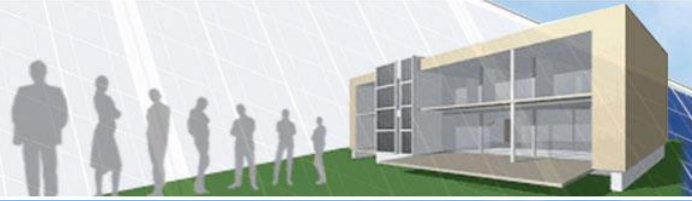
Architect:
Atelier Werner Schmidt
Place: Trimbach, CH
Year: 2015
Size: 3145 m2
straw bale wrapping/
thermal renovation
Complemedis AG





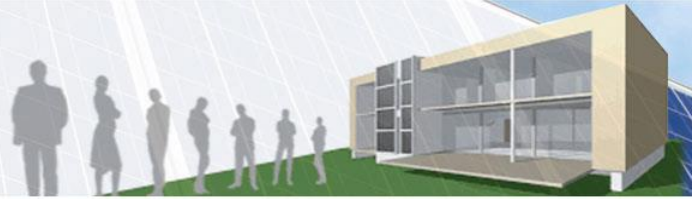
Architect:
Atelier Werner Schmidt
Place: Trimbach, CH
Year: 2015
Size: 3145 m²
straw bale wrapping/
thermal renovation
Complemedis AG





Architect:
Atelier Werner Schmidt
Place: Trimbach, CH
Year: 2015
Size: 3145 m2
straw bale wrapping/
thermal renovation
Complemedis AG





Architect:
Atelier Werner Schmidt
Place: Trimbach, CH
Year: 2015
Size: 3145 m2
straw bale wrapping/
thermal renovation
Complémentis AG





Projekt IEWAN, Nijmegen, Lent, NL
€ 1.032,- /m² (Bruttogeschoßfläche),
exkl. tax, inkl. zusätzliche Kosten
Preis durch Selbstbaumaßnahmen
möglich (SB einfüllen, verputzen)



Projekt iEWAN, NL, ORIO Architekten

Rahmenbau, Stroh innen eingefüllt, Fluchtwege aus Tropenholz (schwer brennbar)



Projekt IEWAN, NL, ORIO Architekten

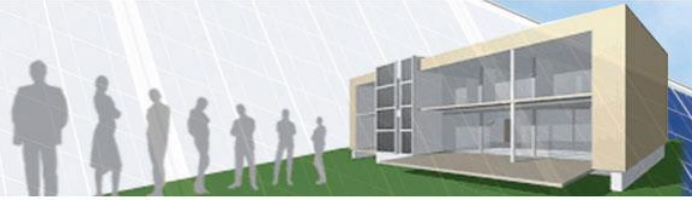
Rahmenbau, Stroh innen eingefüllt, Fluchtwege aus Tropenholz (schwer brennbar)



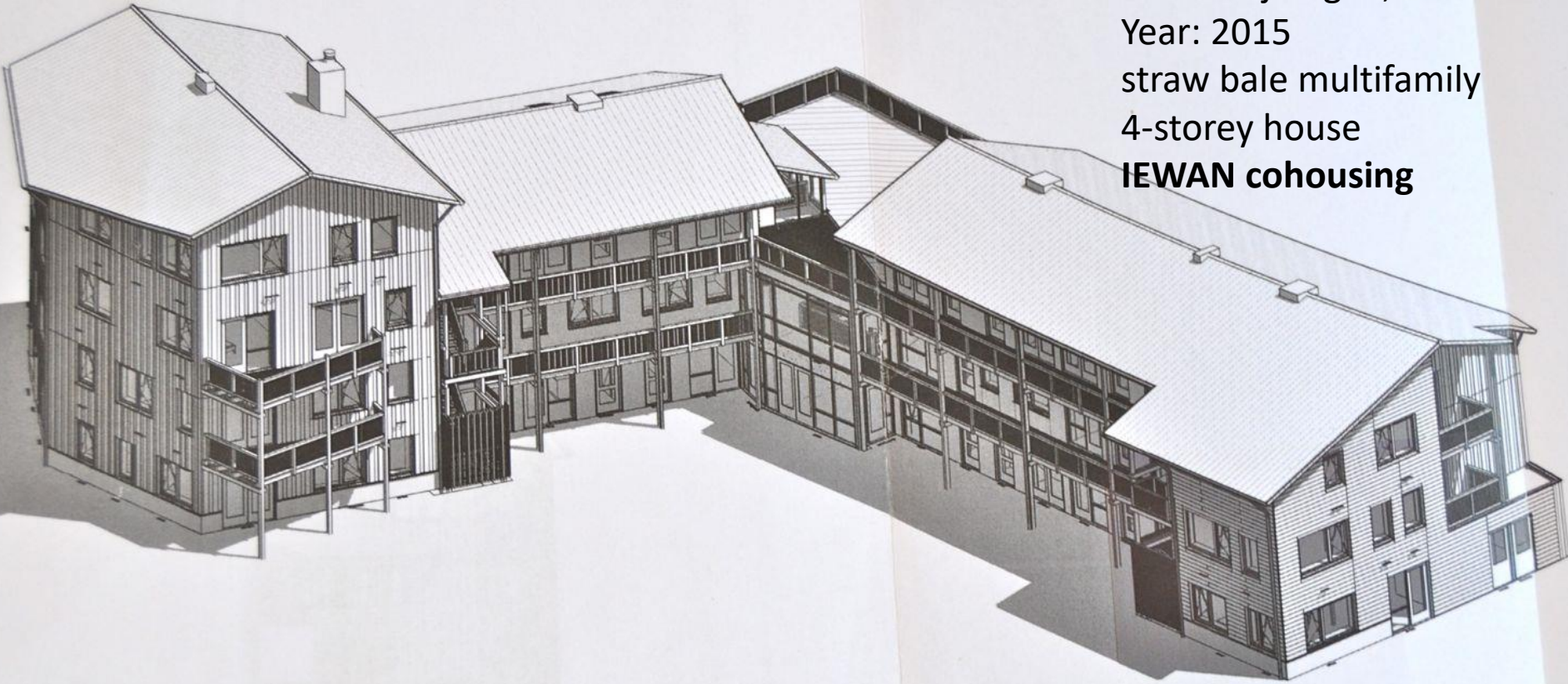
Projekt IEWAN, NL, ORIO Architekten
Rahmenbau, Stroh innen eingefüllt, Fluchtwege aus Tropenholz

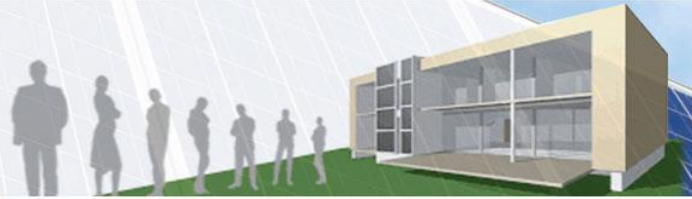


Projekt IEWAN, NL, ORIO Architekten
Rahmenbau, Stroh innen eingefüllt, Fluchtwege aus Tropenholz

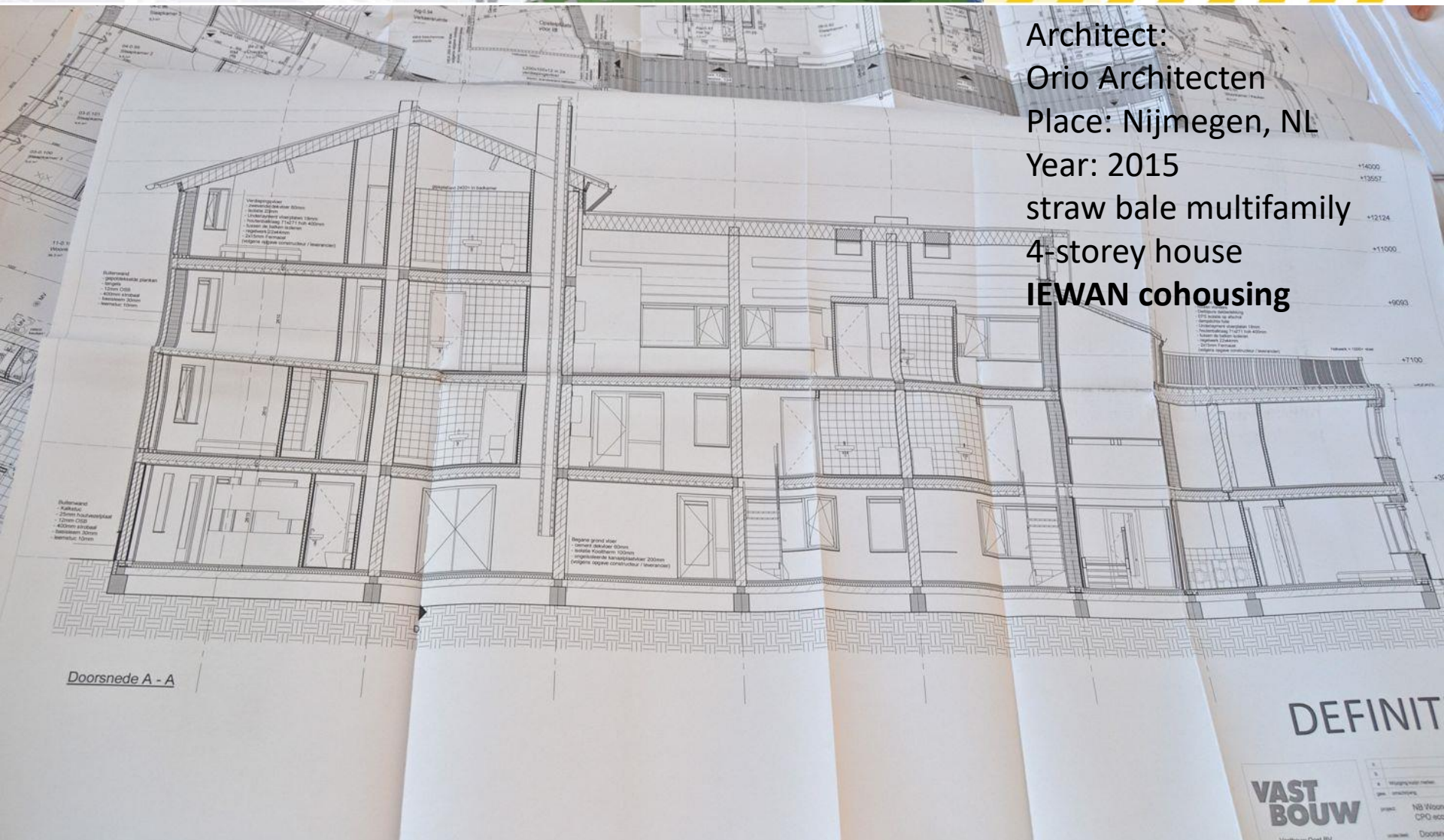


Architect:
Orio Architecten
Place: Nijmegen, NL
Year: 2015
straw bale multifamily
4-storey house
IEWAN cohousing





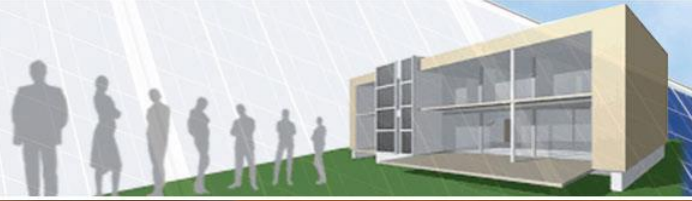
Architect:
Orio Architecten
Place: Nijmegen, NL
Year: 2015
straw bale multifamily
4-storey house
IEWAN cohousing



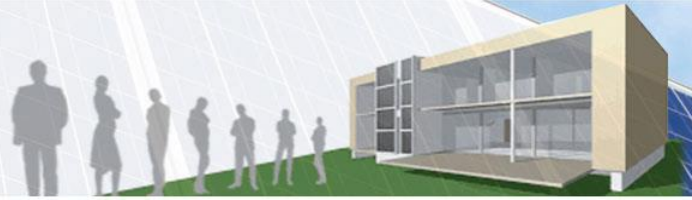
Doorsnede A - A

DEFINIT

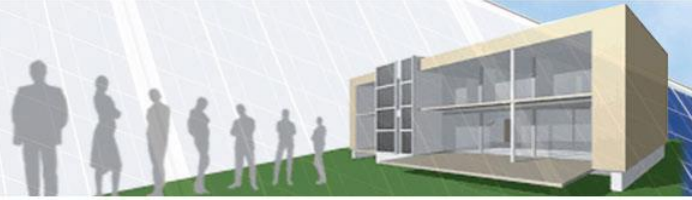
VAST BOUW
NB Woon
CPD 800
Doornik



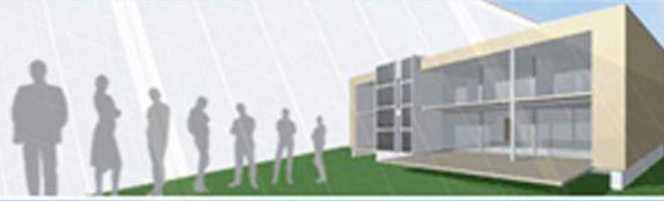
Architect:
Orio Architecten
Place: Nijmegen, NL
Year: 2015
straw bale multifamily
4-storey house
IEWAN cohousing



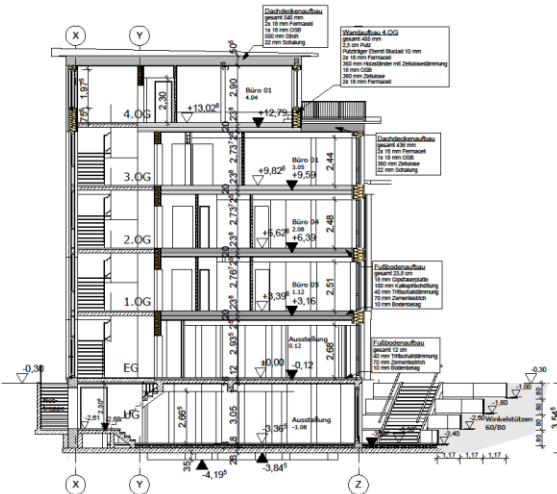
Architect:
Orio Architecten
Place: Nijmegen, NL
Year: 2015
straw bale multifamily
4-storey house
Iewan cohousing



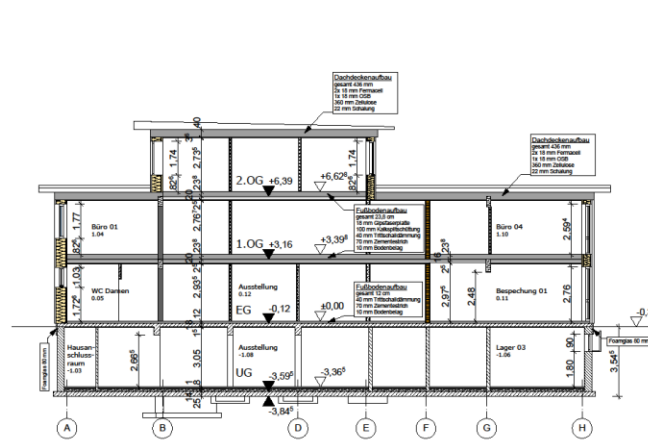
Architect:
Orio Architecten
Place: Nijmegen, NL
Year: 2015
straw bale multifamily
4-storey house
IEWAN cohousing



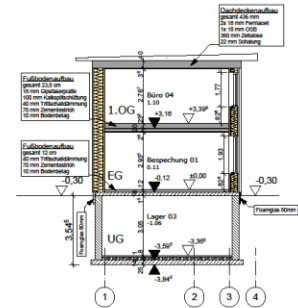
NZNB, Verden/Aller, DE, 5stöckig, Modulbau, Architekten für Nachhaltiges Bauen GmbH
Innenliegendes Ständerwerk verkapselt (Fermacell/Gips)



Schnitt S-02

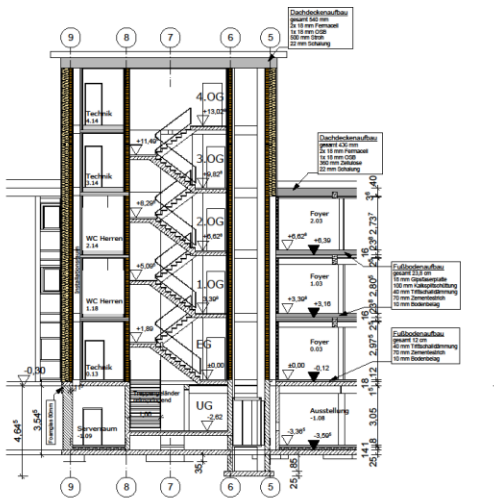


Schnitt S-03

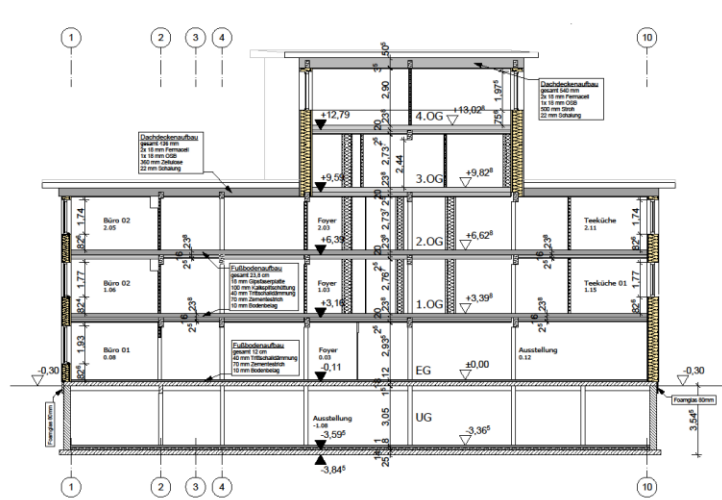


Schnitt S-04

Datum	Änderung	gez.
21.03.13	Wandbau 4.OG geändert, Dachneigung, Brüstungshöhen + Fenstergroßen an Werkplanung angepasst	HD
19.12.12	Deckenaufbau geändert, HRB Fertigungsboden geändert	HD
07.09.12	Höhe Treppeneck UG geändert	HD



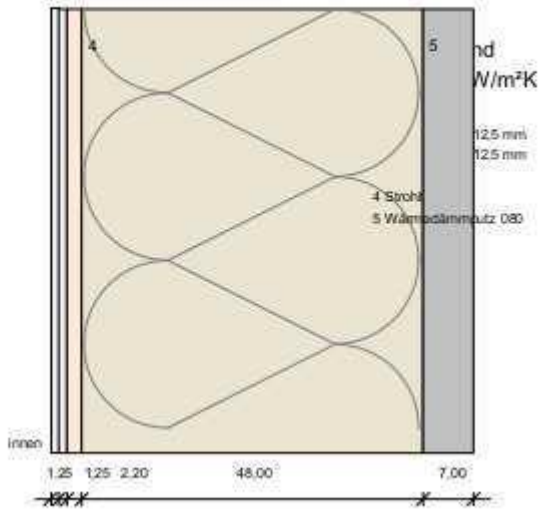
Schnitt S-05



Schnitt S-06

Ausführungsplanung		
PLAN: Schnitt S-02, S-03, S-04, S-05, S-06		
BAUVORHABEN: Neubau Kompetenzzentrum Artilleriestr. 6, 27283 Verden		
Thomas Isselhard Frido Eibers Architekten für Nachhaltiges Bauen		
BAUHERR: Norddeutsches Zentrum für Nachhaltiges Bauen GmbH Artilleriestr. 6, 27283 Verden		
PLANUNG: Architekten für Nachhaltiges Bauen GmbH Artilleriestr. 6, 27283 Verden		
Gezeichnet: H.Drawin-Rosenberger	DATUM: 13.05.2013 M: 1:100	PLAN-NR: 01.5.1

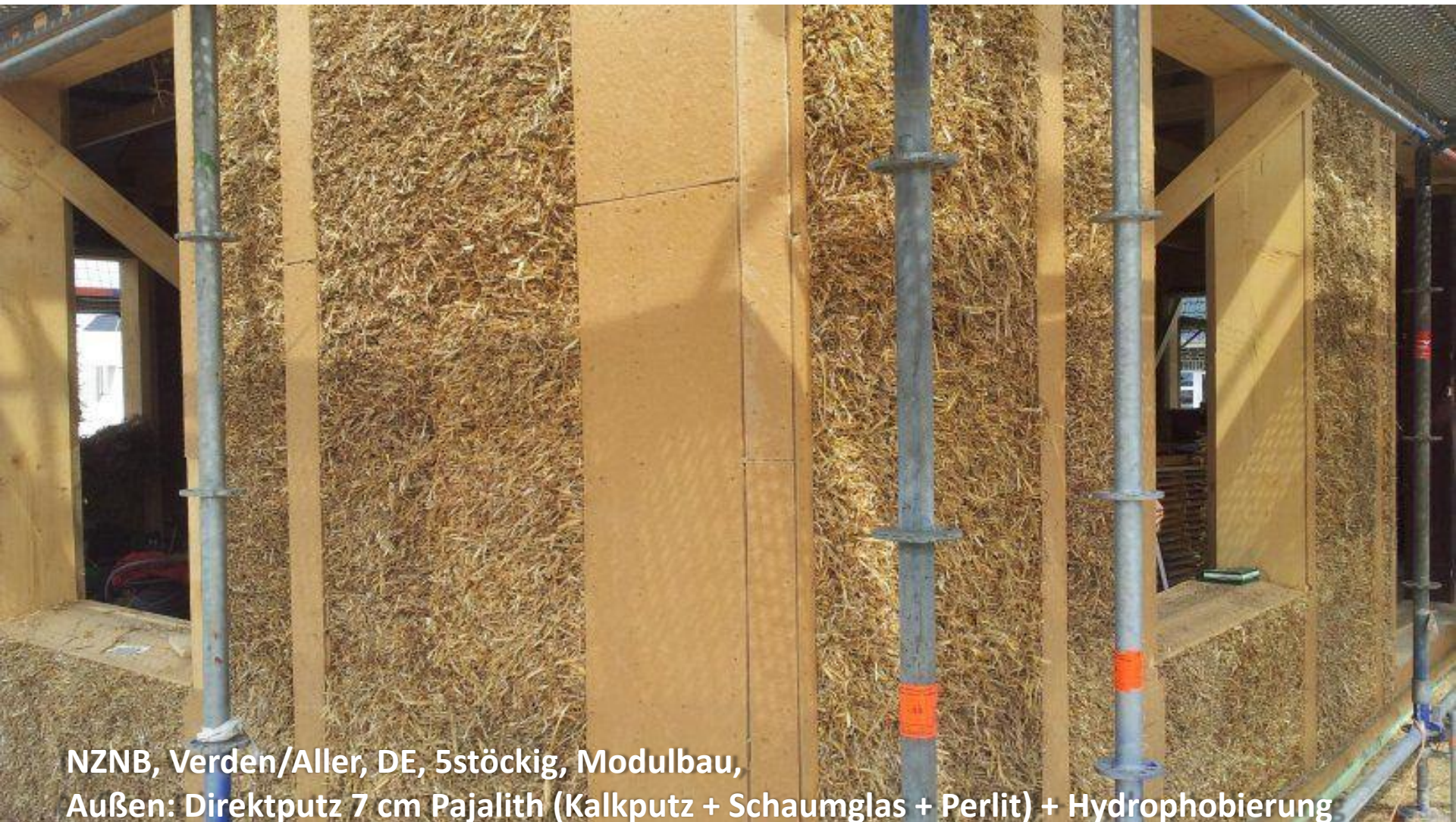




1. Fermacellplatte 1,25 cm
2. Fermacellplatte 1,25 cm
3. OSB Platte 2,20 cm
4. Strohballen 0,48 or 0,60 cm
5. Gräfix 71 ultra 7,00 cm



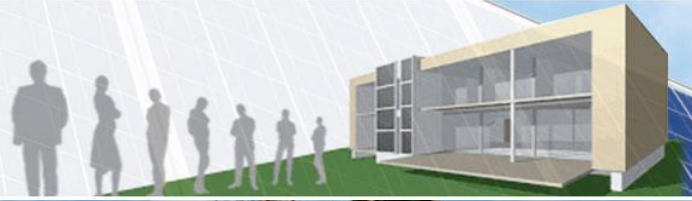
NZNB, Verden/Aller, DE, 5stöckig, Modulbau, Architekten für Nachhaltiges Bauen GmbH
Außen: SB-Module, innen: Holzständer-/KLH-Tragewerk verkapselt (Fermacell)



NZNB, Verden/Aller, DE, 5stöckig, Modulbau,
Außen: Direktputz 7 cm Pajalith (Kalkputz + Schaumglas + Perlit) + Hydrophobierung



NZNB, Verden/Aller, DE, 5stöckig, Modulbau, Brandwiderstand: K260
Außen: Direktputz 7 cm Pajalith (Kalkputz + Schaumglas + Perlit) + Hydrophobierung



Architects:
Thomas Isselhard,
Dirk Scharmer
Place: Verden/Aller, DE
Year: 2015
straw bale house
5-storey house
NZNB
Norddeutsches Zentrum
Für Nachhaltiges Bauen

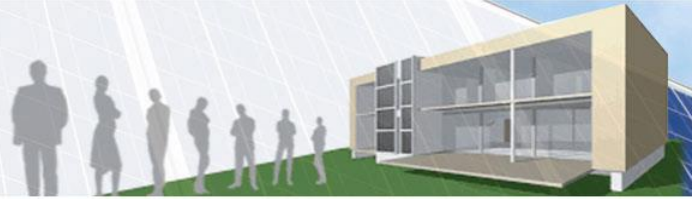




Innenwände
1,25 cm Fermacell
2,20 cm OSB board
8,00 cm Zellulose
2,20 cm Lehmplatte
1,00 cm Lehmputz

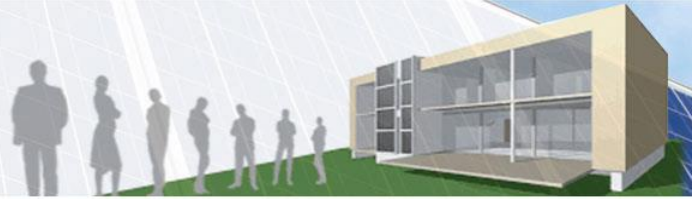
NZNB, Verden/Aller, DE, 5stöckig, Modulbau,
Oberstes Geschoss mit Lehm verputzt, Elektrokanal





Architects:
Thomas Isselhard,
Dirk Scharmer
Place: Verden/Aller, DE
Year: 2015
straw bale house
5-storey house
NZNB
Norddeutsches Zentrum
Für Nachhaltiges Bauen





Architects:

Thomas Isselhard,

Dirk Scharmer

Place: Verden/Aller, DE

Year: 2015

straw bale house

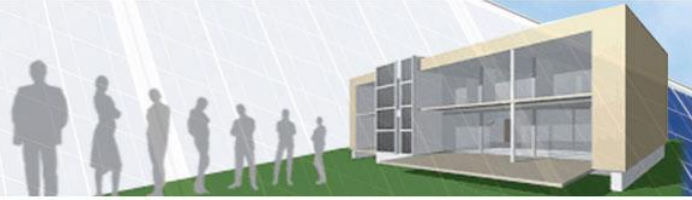
5-storey house

NZNB

Norddeutsches Zentrum

Für Nachhaltiges Bauen





Thank you for watching

Herbert Gruber, asbn