

# EESTIMAAEHITUS

Competence Center for Ecological Building







MOOSTE MANOR  
SOUTH-EASTERN ESTONIA

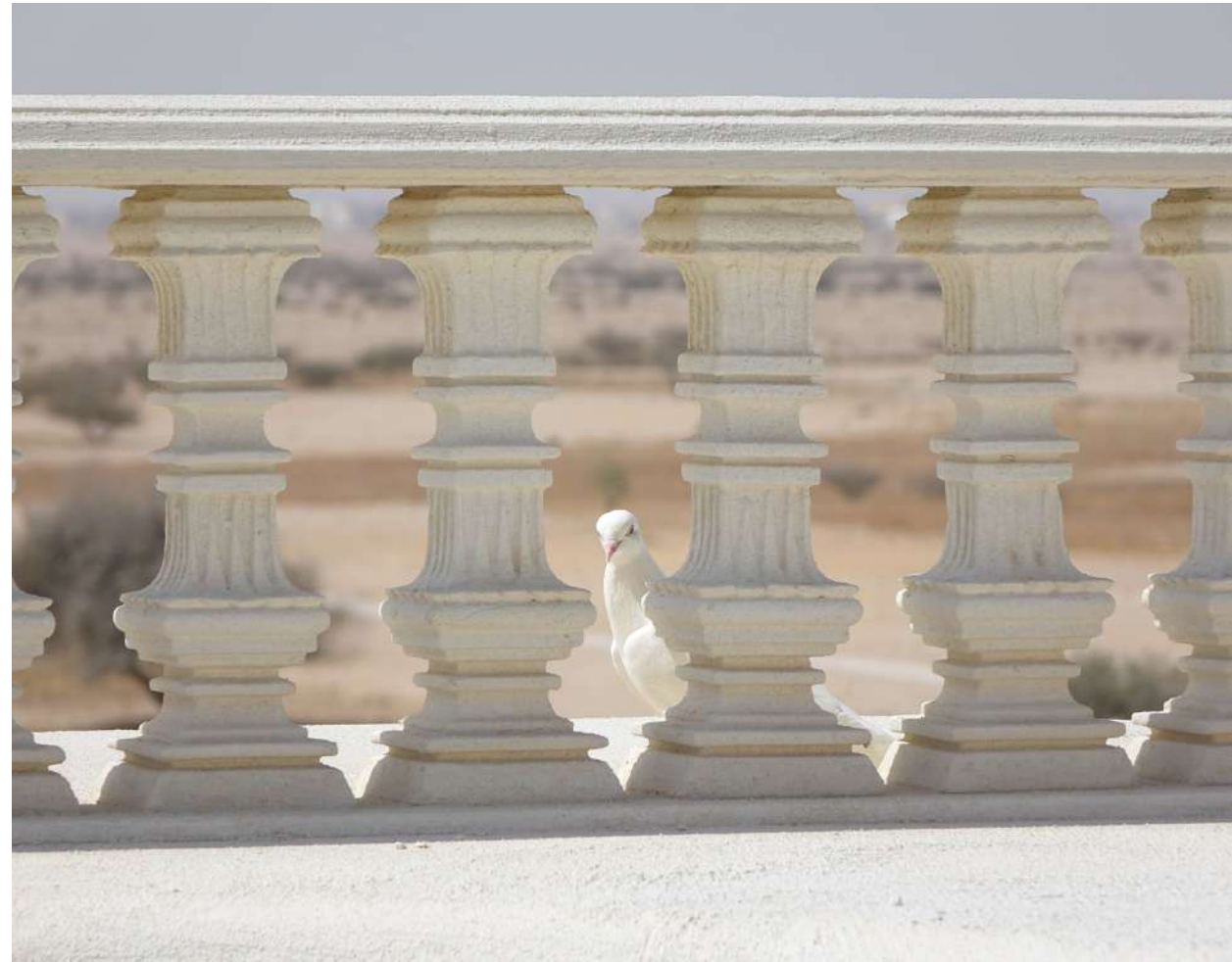
# EESTIMAAEHITUS

Eestimaaehitus - Competence Center for Ecological Building - advises and connects natural building enterprises and organizations, and individuals. We offer broad educational services and promote traditional and modern solutions in the field of energy efficient and natural building. We initiate cooperation between natural building enterprises and research institutions, initiate and manage local and International projects, and International networking.

# FOCUS



EARTH



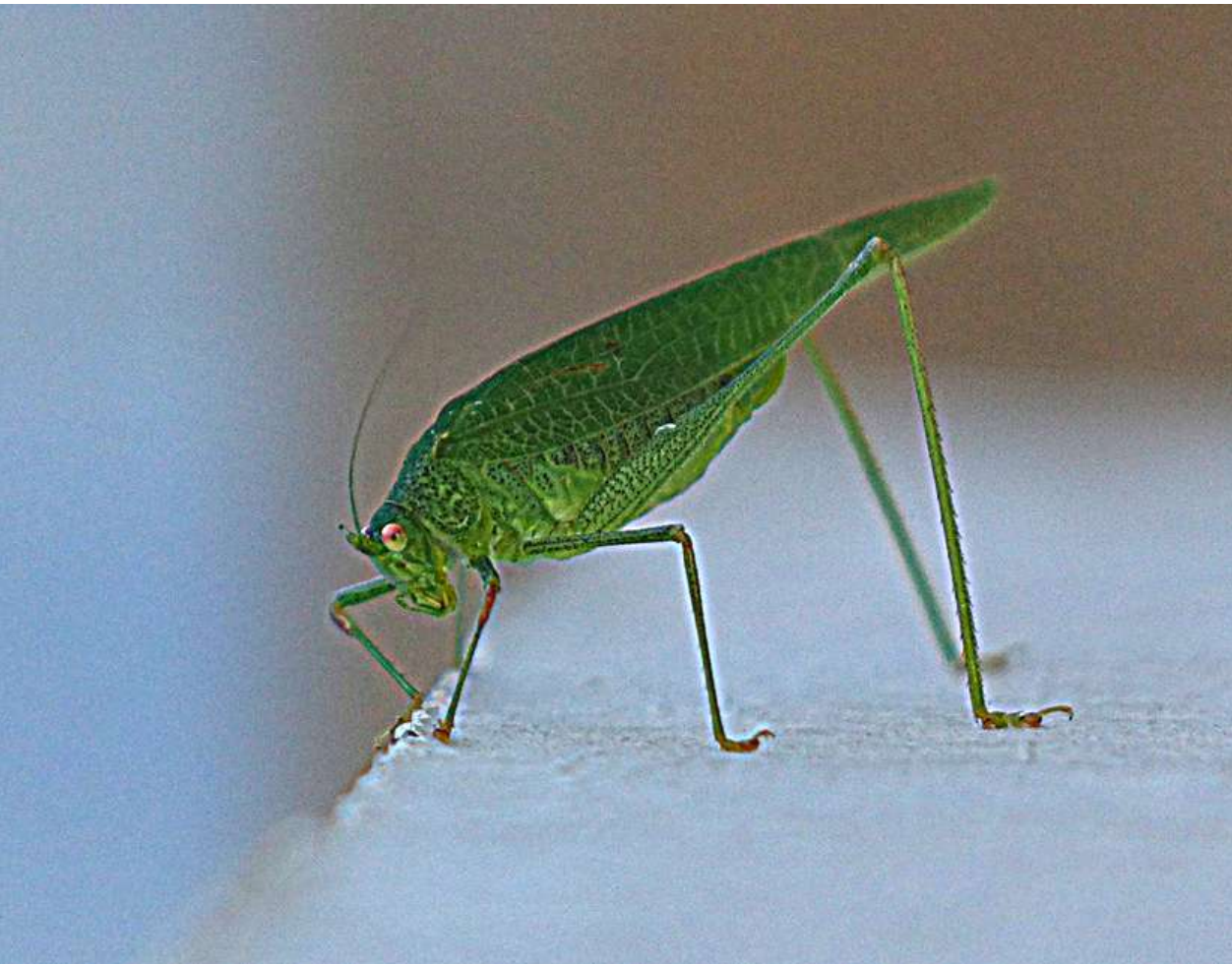
LIME



NATURAL FIBERS

# MEMBERS

DIFFERENTIATED ANNUAL FEES  
2 REFERRALS (EXISTING MEMBERS)  
MIN. 3 DAYS OF VOLUNTARY WORK FOR ORGANIZATION



INDIVIDUALS



NGOs & NPOs



ENTERPRISES



TRAINERS  
THERAPIST  
PLASTERERS  
OVEN BUILDER  
EARTH BUILDERS  
STRAW BUILDERS  
PROJECT MANAGERS  
MATERIAL PRODUCERS



# CENTER

CURRENTLY RENOVATING AN OLD MANOR STABLE & CARRIAGE HOUSE.  
IN 2020, WE WILL OPEN A TRAINING, PRODUCT DEVELOPMENT AND  
COMPETENCE CENTER FOR ECOLOGICAL BUILDING IN MOOSTE MANOR.



OLD MANOR STABLE



RAMMED EARTH



HEMPCRETE



# PROCUREMENT



CERTIFIED  
CLAY PLASTERS

TRADITIONAL METHOD  
PRODUCED LIME

ECVET CERTIFICATE  
STEP CERTIFICATE

[ecvetearth.hypotheses.org](http://ecvetearth.hypotheses.org)  
[strawbuilding.eu](http://strawbuilding.eu)

# STRAW BALE BUILDING



BIG BALE HOUSE



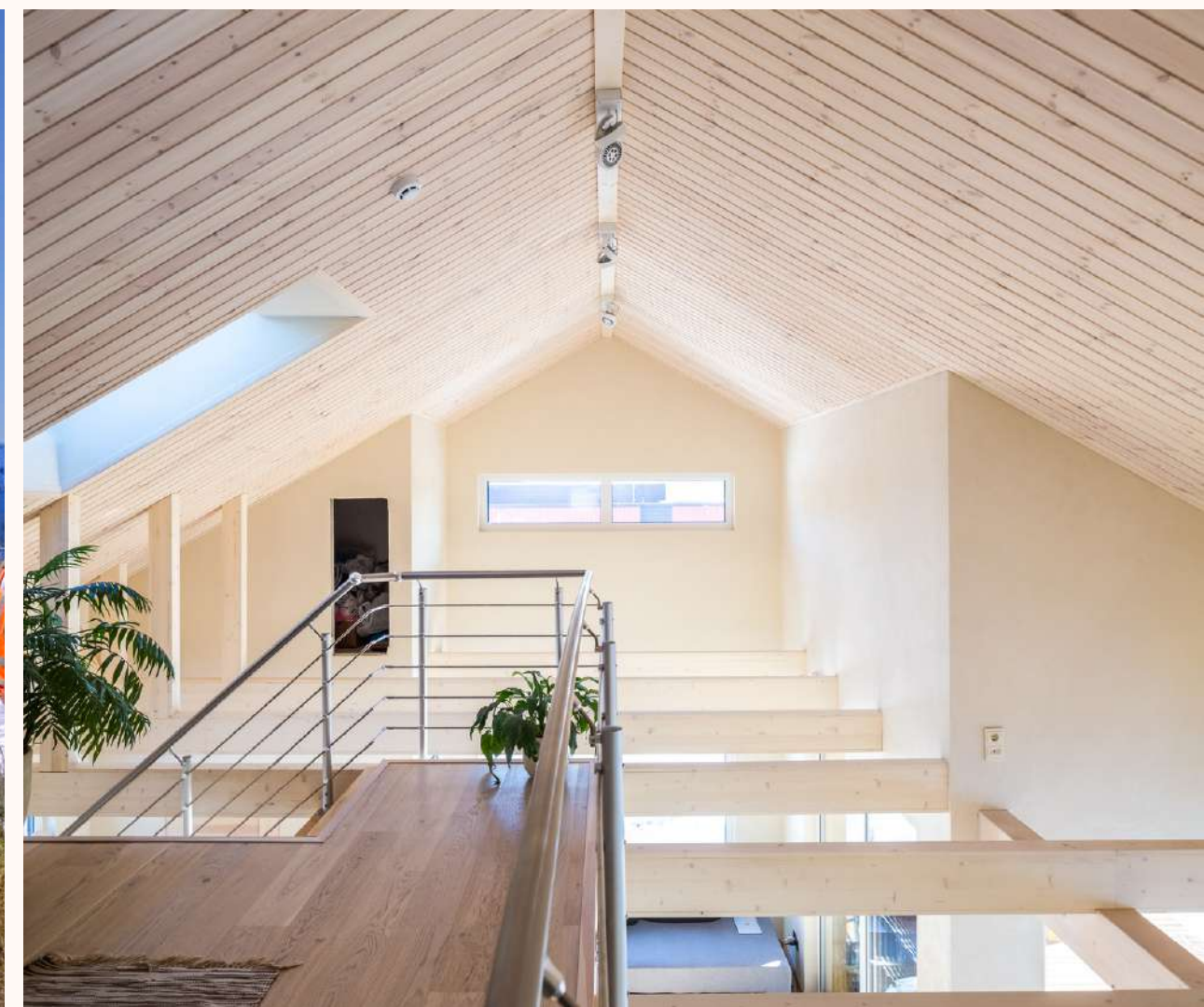
HIVE - THERAPY HOUSE



ECOCOCON



# PLASTERING



CONTACT & FOLLOW US

# EESTIMAAEHITUS

Competence Center for Ecological Building

Mooste Manor, Mõisahoovi tee 5,  
Põlva vald, Põlvamaa 64616, Estonia

Phone: +372 56 226 066

[tere@eestimaaehitus.ee](mailto:tere@eestimaaehitus.ee)

[www.eestimaaehitus.ee](http://www.eestimaaehitus.ee)



A close-up photograph of two hands gently cradling a large, smooth, yellow-green sphere. The sphere has a slightly textured surface and is highly reflective, showing bright highlights from the lighting. The hands are positioned on either side of the sphere, with fingers slightly curled around it. The background is a solid, dark red color, which makes the yellow-green sphere stand out prominently. The overall mood is warm and appreciative.

THANK YOU!