



# News From Straw Bale Building in Slovakia



Zuzana Kierulfová



# Sustainable Architecture





Straw bale building training for professionals

STEP





ESBG 2007

# Italy 2007



**FUNDRAISING**

- FUNDRAISING
- How much are we raising / how many people?
- FUNDRAISING
- FUNDRAISING
- FUNDRAISING

100 - 120  
100 - 120  
100 - 120

**FUNDRAISING**

- Donations (making lists)
- Sponsors
- Corporate
- National / Regional

**ACTION PLAN**

contact no for... in the country

# **STEP in a “Slovak way”**

## **(level 3)**

**S1 - INTRO (U1) + DESIGN (U7)**

**S2 - INFILL (U2)**

**S3 - LOAD BEARING (U3)**

**S4 - WRAPPING (U4)**

**S5 - FINISHES, PLASTERS (U5) +  
BUILDING PHYSICS (U6)**

**S6 - MARKETING, COMMUNICATION (U8)**

# text books





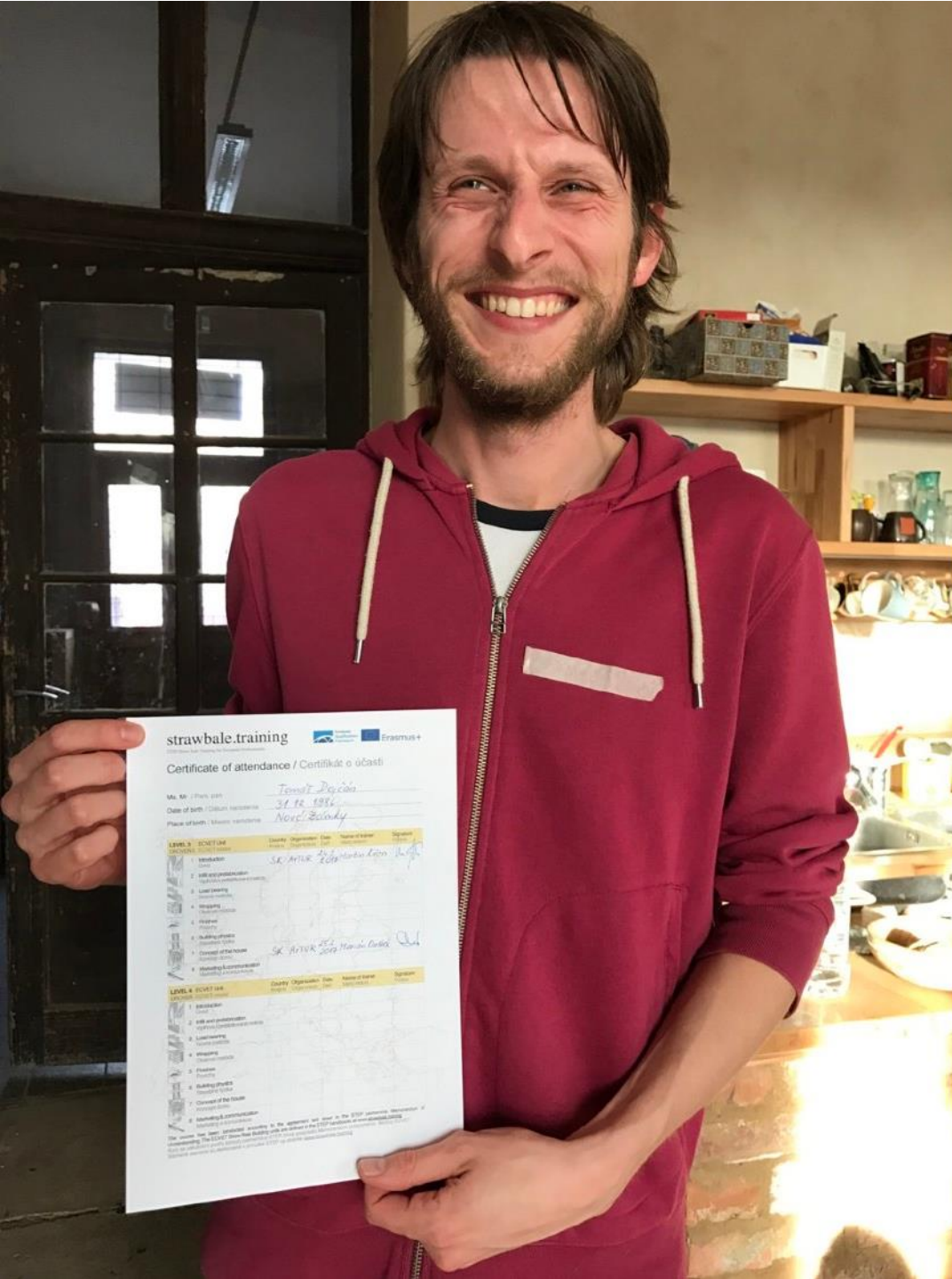
# Train all modules



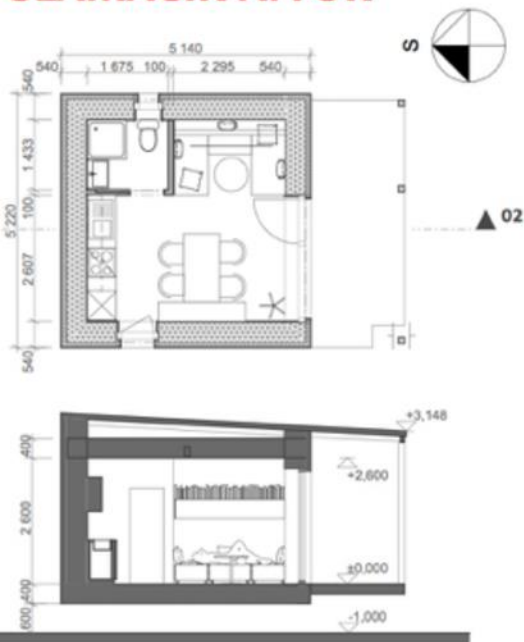
# written test



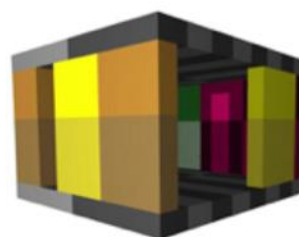
# ECVET certificates



# SLAMÁČIK ARTUR



## INTERIÉR MODUL A



**SSS VÝPLŇOVÁ metóda stojka na celú šírku uchytenie kuchyne (osb,SDK,obklad)**  
 výroba: kurz S2 (4ks)  
 spodné v=1500, h=400, d=1550, m=100kg  
 vrchné v=1000, h=400, d=1550, m=70kg

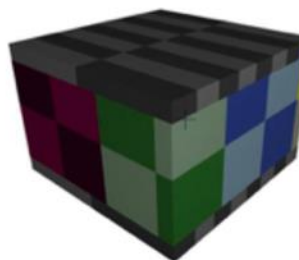
**OBALOVÁ metóda obalenie k OSB, (kúpeľňa osb,SDK,obklad)**  
 výroba: kurz S4 (4ks)  
 spodné v=1500, h=400, d=1550, m=100kg  
 vrchné v=1000, h=400, d=1550, m=70kg

**NSS VÝPLŇOVÁ metóda CÚT na demonštráciu stáča Zrada**  
 výroba: kurz S2 (4ks)  
 spodné v=1500, h=400, d=1550, m=100kg  
 vrchné v=1000, h=400, d=1550, m=70kg

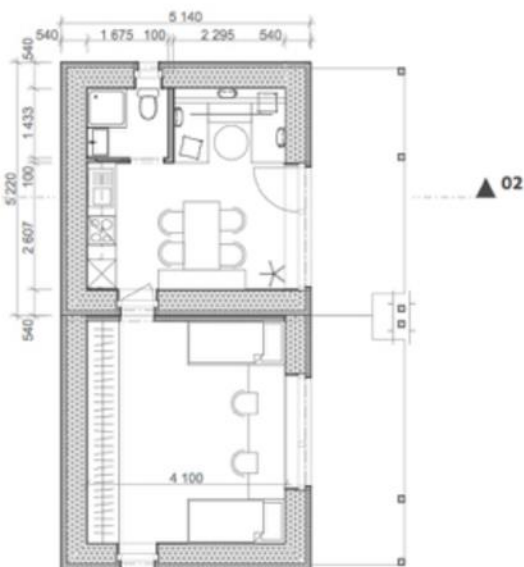
**Nosná metóda stena hrubšia**  
 výroba: kurz S2 (4ks)  
 spodné v=1500, h=500, d=1550, m=150kg  
 vrchné v=1000, h=500, d=1550, m=93kg

**NSS VÝPLŇOVÁ metóda stĺpy, Franc. metóda**  
 výroba: kurz S2 (4ks)  
 spodné v=1500, h=400, d=1550, m=100kg  
 vrchné v=1000, h=400, d=1550, m=70kg

**PREFABRIKÁCIA STROPNÝCH PANELOV**  
 výroba: kurz S1,S2,S3,S4,S5 (spolu 16ks)  
 pohľadové-stropné dosky, vzduchotesná fólia, slama, podstrešná fólia, zadoskovanie  
 v=400, š=530, d=2500, m=60kg



# SLAMÁČIK ARTUR +



## INTERIÉR MODUL B



Organica



# Letokruh



LETOKRUH



Prírodné stavby Komplet  
(viesané drevo a prírodné materiály)

WWW.LETOKRUH.SK

Jozef Michalik

Tradičné stavby, prírodné stavby

Tradičné stavby



ARTUR



**Bývame Zdravo**  
Staviame prírodné domy





Roman Miškov







atelier - Createrra



# ateliér - Createrra: Daniel Marinica



# ateliér - Createrra: Daniel Marinica



# ateliér - Createrra: Daniel Marinica



# atelier - Createrra: Daniel Marinica



# ateliér - Archa, Gusto Ugróczy a Tomáš Tines



arch. Boris Hochel





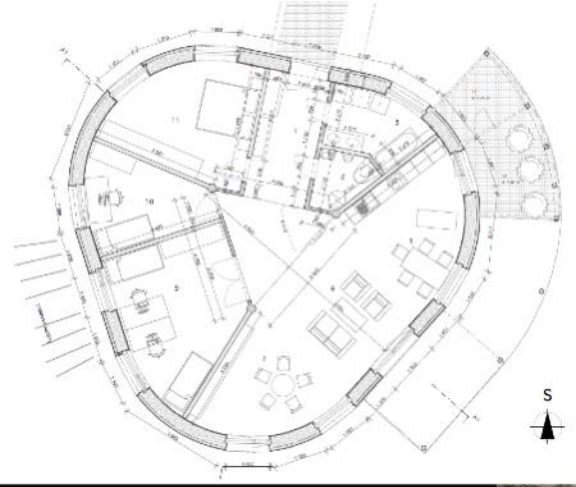


arch. Boris Hochel



arch. Boris Hochel





Zuzana Kierulfová  
Barbora Hollá  
Createrra



# ateliér - Createrra: Petra Trokanová



# ateliér - Createrra: Marián Prejsa



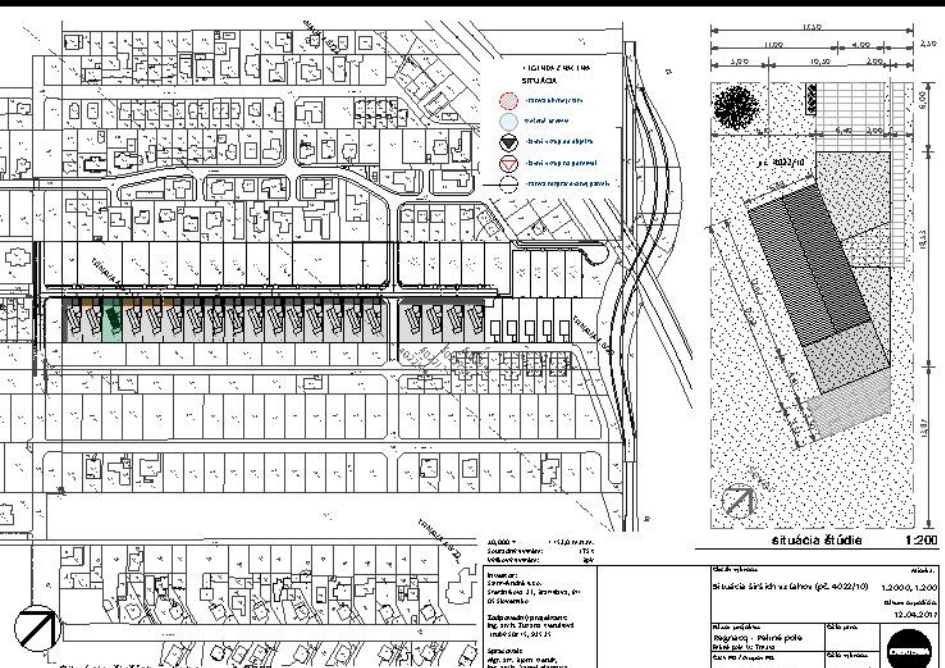
Zuzana Kierulfová  
Createrra



# social developing - Bzovík



# Development - Trnava





# Ecococon - Fire resistance REI 120 / REIef 120 - 70kN/m!!



## Test interior - REI 120

Inside 30mm clay plaster  
High temperature up to 1050 °C  
Max. deformation 7,2mm

## Exterior test - REIef 120

60mm Fibreboard  
Lower temperature up to 680 °C  
Max. deformation 7,7mm



• Max. surface temperature: 31.6 ° C !

# Theatre in Žilina





ACT eco  
Erasmus +

