

BY RIKKI NITZKIN

# STRAWBALE BUILDING IN SPAIN



# THE SPANISH STRAW BALE NETWORK

- 100+ members
- Video conferences 6-8x / year
- Member's newsletter 6x a year



**La Red de Construcción con Paja**

[www.casasdepaja.org](http://www.casasdepaja.org)

# V NATIONAL GATHERING VALENCIA 2018

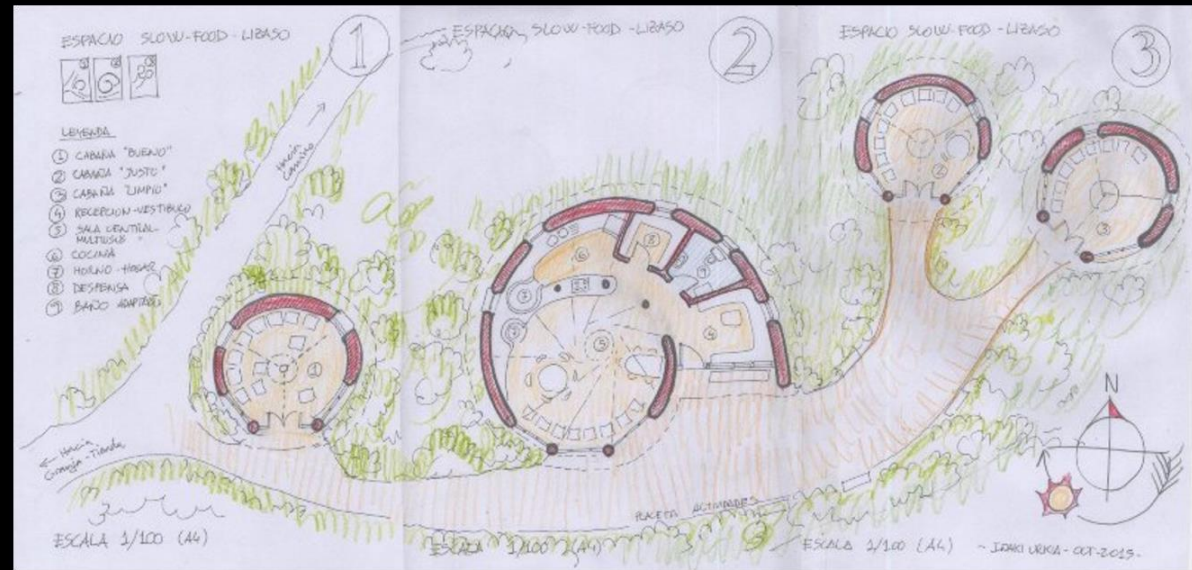




# NATIONAL TRAINING FOR UNEMPLOYED!

# GOVERNMENT SUBSIDISED TRAINING

- Pilot Project Slow Food Navarra "Snail House" 2017
- 628 hours of training
- 21 students
- 8 modules (ecobuilding)
- Navarra Employment Service, CENIFER, SEPE (natl. employment agency)



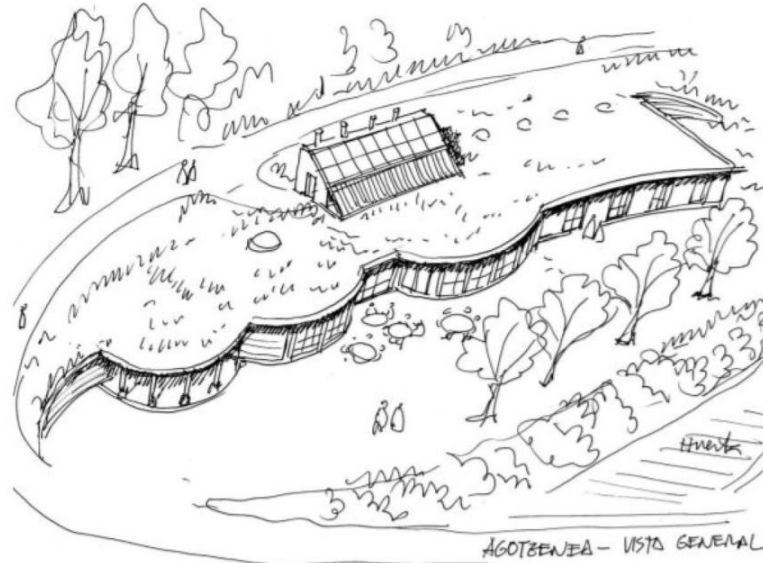


# 2018: PROJECT 2

## Bioeraikuntza ikastaroa **Curso de Bioconstrucción**

Zubiri, 480 ordu, 2018ko Ekaina- Iraila

Zubiri, 480 horas, Junio - Septiembre 2018



Organizan / Antolatzen dute:  
Colaboran / Laguntzen dute:

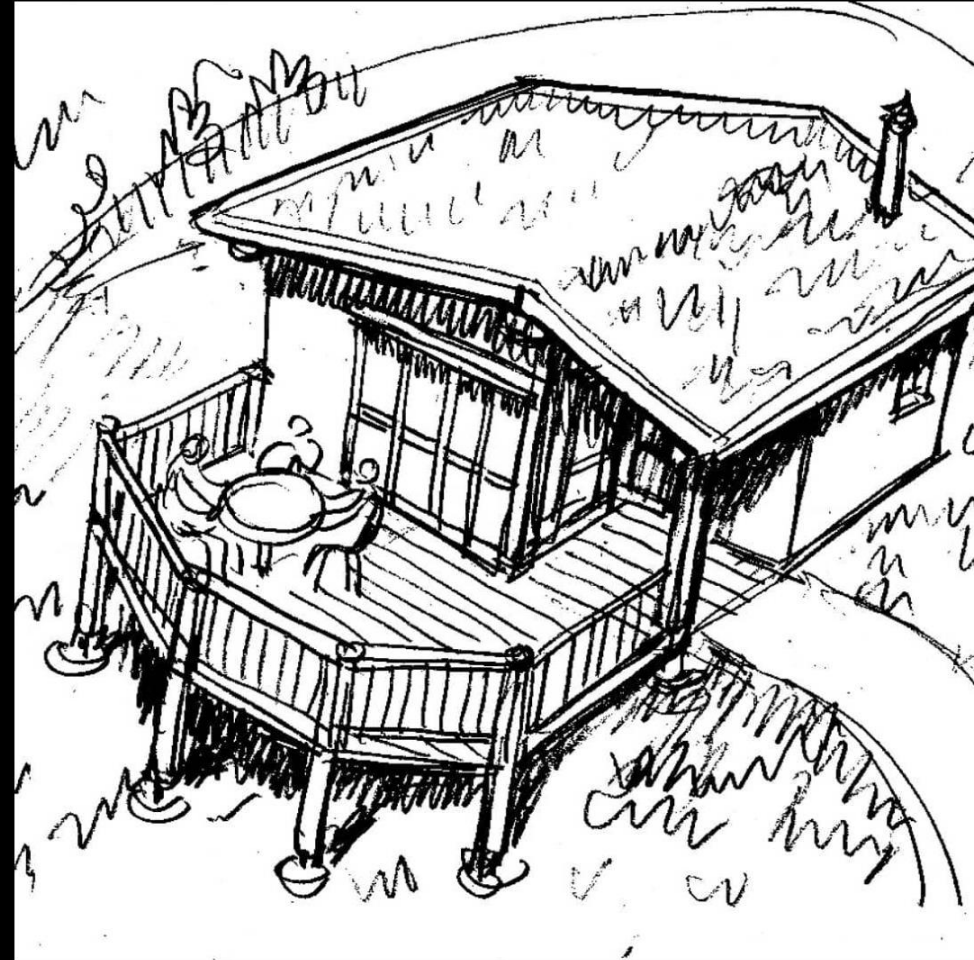


- Organized by Exteco Micro-cooperative to build Agotzenea educational center
- Course incorporated in national SEPE catalog.
- 480 hours
- Can now be reproduced anywhere in Spain!



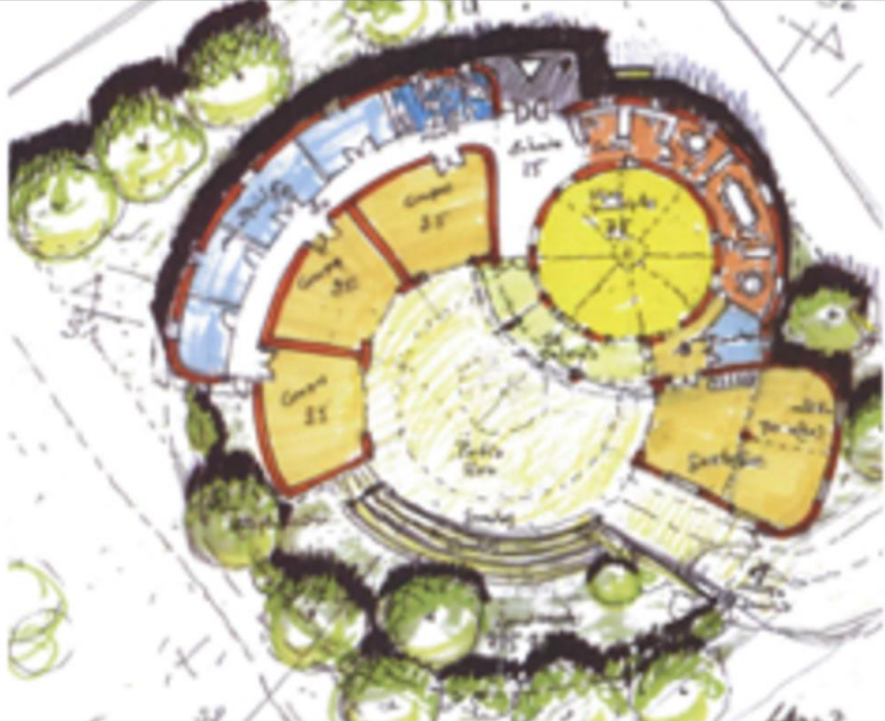
# PROJECT 3: MINIHOUSES

- 307 hours
- Open to any unemployed person in Spain
- Training in collaboration with Okambuva and STEP Austria



# PUBLIC STRAWBALE BUILDINGS IN SPAIN

# YOUTH CENTER IN BERRIOZAR, NAVARRA



# CA SES LLÚCIES UIB (UNIV. BALEARES)

- arq. Rafael Sala
- Builders: Ferrys Construction
- 2017-2019
- Passive House



# MAS LA BOT VALDEROBRES

- ARCHITECT VALENTINA MAINI
- 2006



# ECOKAMPING ARBIZU, NAVARRA

- Architect Iñaki Urkía
- 2013-15



# WORLD EXPO 2008 ZARAGOZA

## ARCHITECT RICARDO HIGUERAS



# "LA VIERA" 2011-12



## "Ecological Building with straw bales in Vocational Training"

- SOMESO TRAINING CENTER IN A Coruña
- IN COLABORATION CON WITH UFA FABRIC (DE) AND MANY OTHER NATIONAL ORGANIZATIONS



BUILDERS: JORGE GARCIA AND MARTIN KRUG; 33COOP. 2016

# PARC DE LES OLORS



# PREFAB IS GROWING

# MAY 2019: ECOPAJA

- Straw bale pre-fab panels produced in Alava
- Open house visits



# Okambuva DIY prefab panels

OPENSOURCE TECHNOLOGY



# LOAD-BEARING EXPERIMENTS

- Main beam on load-bearing straw
- Miga Architects



  
miga  
ecoarquitectura

# "OPEN HOUSE"

# CASETADEPALLA

- Open building to visits by professional colleges
- 1 day training for professionals



# MAS LA LLUM

- Jumbo Bale, Small Bale, Light Straw Clay, Adobe, etc.
- Monthly open days to visit project and collaborate
- Rural hotel
- Rebuilt after destroyed in fire 2017





# OWNER-BUILDERS ARE GETTING BETTER!

DANIEL BARRIO  
([MINKA.ES](http://MINKA.ES))

ALFONSO ZAVALA  
ALLEN & CALCHE



- Madrid 2016-2018
- 80% self built
- CUT technique & light straw clay
- 110m<sup>2</sup>
- Clay plaster inside, lime outside

# ARCHITECT CAROLINA HONRADO



- Self-built by Carlos Sanz
- Trombe Wall
- Green roof with SB insulation
- Stove lit average 10 days a year!
- Clay plaster inside, lime outside

# OWNER BUILT HOME, ÁLAVA; 2015



GRACIAS

[WWW.CASASDEPAJA.ORG](http://WWW.CASASDEPAJA.ORG)

[HTTPS://WWW.FACEBOOK.COM/RCP-RED-CONSTRUCCIÓN-CON-PAJA](https://www.facebook.com/RCP-RED-CONSTRUCCIÓN-CON-PAJA)